



JEE Advanced Exam 2017 (Paper & Solution)

Date : 21 / 05 / 2017

PAPER-2

PART-I (PHYSICS)

SECTION – 1 (Maximum Marks : 21)

- This section contains **SEVEN** questions
- Each question has **FOUR** options (A), (B), (C) and (D). **ONLY ONE** of these four options is correct.
- For each question, darken the bubble corresponding to the correct option in the ORS.
- For each question, marks will be awarded in one of the following categories:

Full Marks	: +3	If only the bubble corresponding to the correct option is darkened.
Zero Marks	: 0	If none of the bubbles is darkened.
Negative Marks	: -1	In all other cases.

Q.1 A photoelectric material having work-function ϕ_0 is illuminated with light of wavelength $\lambda \left(\lambda < \frac{hc}{\phi_0} \right)$.

The fastest photoelectron has a de Broglie wavelength λ_d . A change in wavelength of the incident light by $\Delta\lambda$ results in a change $\Delta\lambda_d$ in λ_d . Then the ratio $\Delta\lambda_d/\Delta\lambda$ is proportional to

- (A) λ_d^3/λ (B) λ_d/λ (C) λ_d^2/λ^2 (D) λ_d^3/λ^2

Ans. [D]

Sol.
$$K.E_{\max} = \frac{hc}{\lambda} - \phi_0$$

$$\lambda_d = \frac{h}{\sqrt{2mK.E_{\max}}}$$

$$\lambda_d = \frac{h}{\sqrt{2m\left(\frac{hc}{\lambda} - \phi_0\right)}}$$

$$\lambda_d^2 = \frac{h^2}{2m\left(\frac{hc}{\lambda} - \phi_0\right)}$$

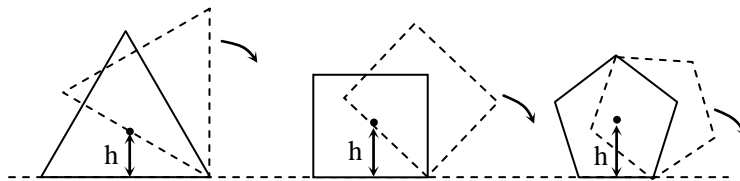
$$\lambda_2^d \left(\frac{hc}{\lambda} - \phi_0 \right) = \frac{h^2}{2m}$$

$$\left(\frac{hc}{\lambda} - \phi_0 \right) = \frac{h^2}{2m} \cdot \left(\frac{1}{\lambda_d^2} \right)$$

$$-\frac{hc}{\lambda^2} d\lambda - 0 = \frac{h^2}{2m} \left(\frac{-2}{\lambda_d^3} d\lambda_d \right)$$

$$\frac{d\lambda_d}{d\lambda} = \frac{\lambda_d^3}{\lambda^2}$$

Q.2 Consider regular polygons with number of sides $n = 3, 4, 5, \dots$ as shown in the figure. The centre of mass of all the polygons is at height h from the ground. They roll on a horizontal surface about the leading vertex without slipping and sliding as depicted. The maximum increase in height of the locus of the centre of mass for each polygon is Δ . Then Δ depends on n and h as



(A) $\Delta = h \left(\frac{1}{\cos\left(\frac{\pi}{n}\right)} - 1 \right)$

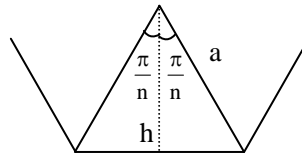
(B) $\Delta = h \tan^2\left(\frac{\pi}{2n}\right)$

(C) $\Delta = h \sin\left(\frac{2\pi}{n}\right)$

(D) $\Delta = h \sin^2\left(\frac{\pi}{n}\right)$

Ans. [A]

Sol.



$$h = a \cos \frac{\pi}{n}$$

maximum height = a

$$\Delta y_{\max} = a - h$$

$$= \left(\frac{h}{\cos \frac{\pi}{n}} - h \right)$$

$$= h \left(\frac{1}{\cos \frac{\pi}{n}} - 1 \right)$$

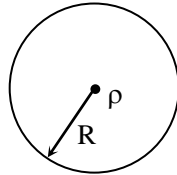


Q.3 Consider an expanding sphere of instantaneous radius R whose total mass remains constant. The expansion is such that the instantaneous density ρ remains uniform throughout the volume. The rate of fractional change in density $\left(\frac{1}{\rho} \frac{d\rho}{dt}\right)$ is constant. The velocity v of any point on the surface of the expanding sphere is proportional to

- (A) R^3 (B) R (C) $\frac{1}{R}$ (D) $R^{2/3}$

Ans. [B]

Sol.



$$M = \rho \left(\frac{4}{3} \pi R^3 \right)$$

$$\rho R^3 = \text{constant}$$

$$\log \rho + 3 \log R = \text{constant}$$

$$\frac{1}{\rho} \frac{d\rho}{dt} + \frac{3}{R} \frac{dR}{dt} = 0$$

$$\frac{3}{R} \frac{dR}{dt} = - \frac{d\rho}{\rho dt} \quad \left\{ \frac{d\rho}{\rho dt} = \text{constant} \right.$$

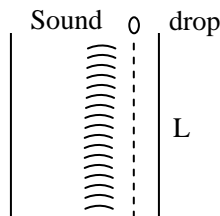
$$\text{Velocity any point on surface } \frac{dR}{dt} \propto R$$

Q.4 A person measures the depth of a well by measuring the time interval between dropping a stone and receiving the sound of impact with the bottom of the well. The error in his measurement of time is $\delta T = 0.01$ seconds and he measures the depth of the well to be $L = 20$ meters. Take the acceleration due to gravity $g = 10 \text{ ms}^{-2}$ and the velocity of sound is 300 ms^{-1} . Then the fractional error in the measurement, $\delta L/L$, is closest to

- (A) 5% (B) 3% (C) 0.2% (D) 1%

Ans. [D]

Sol.



$$t = \sqrt{\frac{2\ell}{g}} + \left(\frac{\ell}{v} \right)$$

$$dt = \sqrt{\frac{2}{g}} \left(\frac{1}{2\sqrt{l}} \cdot dl + \frac{dl}{v} \right)$$

$$\sqrt{\frac{g}{2}} dt = \frac{dl}{2\sqrt{l}} + \frac{dl}{v}$$

$$\sqrt{\frac{g}{2}} dt = \left(\frac{dl}{l} \right) + \left(\frac{\sqrt{l}}{2} \right) + \frac{dl}{v}$$

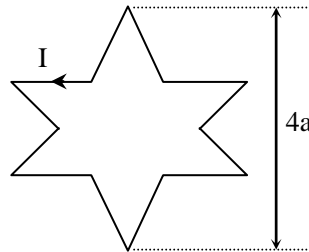
$$\sqrt{\frac{g}{2}} dt = \frac{dl}{l} \left(\frac{\sqrt{l}}{2} + \frac{l}{v} \right)$$

$$\sqrt{\frac{10}{2}} \times 0.01 = \frac{dl}{l} \left(\frac{\sqrt{20}}{2} + \frac{20}{300} \right)$$

$$\frac{dl}{l} = \frac{\sqrt{5} \times 0.01}{\left(\sqrt{5} + \frac{1}{15} \right)}$$

$$\% \frac{dl}{l} \times 100 = \frac{\sqrt{5}}{\left(\sqrt{5} + \frac{1}{15} \right)} \approx 1\%$$

- Q.5** A symmetric star shaped conducting wire loop is carrying a steady state current I as shown in the figure. The distance between the diametrically opposite vertices of the star is $4a$. The magnitude of the magnetic field at the centre of the loop is



(A) $\frac{\mu_0 I}{4\pi a} 3[\sqrt{3} - 1]$

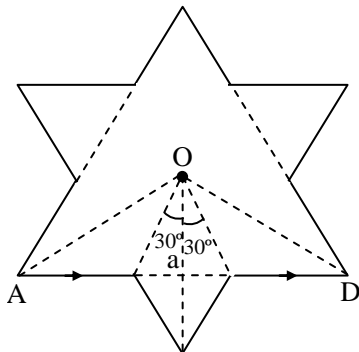
(B) $\frac{\mu_0 I}{4\pi a} 6[\sqrt{3} - 1]$

(C) $\frac{\mu_0 I}{4\pi a} 3[2 - \sqrt{3}]$

(D) $\frac{\mu_0 I}{4\pi a} 6[\sqrt{3} + 1]$

Ans. [B]

Sol.



$$B_{at\ O} = \frac{\mu_0 i}{4\pi a} [\sin 60^\circ \times 2 - \sin 30^\circ \times 2] \times 6$$

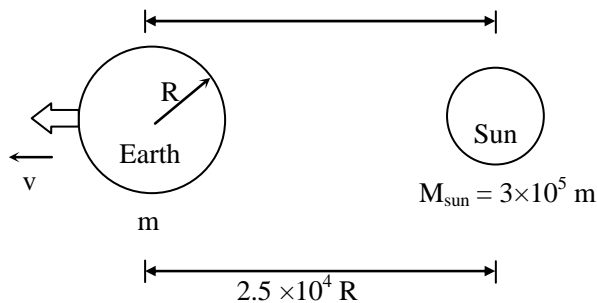
$$= \frac{\mu_0 i}{4\pi a} [\sqrt{3} - 1] 6$$

Q.6 A rocket is launched normal to the surface of the Earth, away from the Sun, along the line joining the Sun and the Earth. The Sun is 3×10^5 times heavier than the Earth and is at a distance 2.5×10^4 times larger than the radius of the Earth. The escape velocity from Earth's gravitational field is $v_e = 11.2 \text{ km s}^{-1}$. The minimum initial velocity (v_s) required for the rocket to be able to leave the *Sun-Earth system* is closest to (*Ignore the rotation and revolution of the Earth and the presence of any other planet*)

- (A) $v_s = 42 \text{ km s}^{-1}$ (B) $v_s = 62 \text{ km s}^{-1}$ (C) $v_s = 22 \text{ km s}^{-1}$ (D) $v_s = 72 \text{ km s}^{-1}$

Ans. [A]

Sol.



$$v_e = \sqrt{\frac{2Gm}{R}}$$

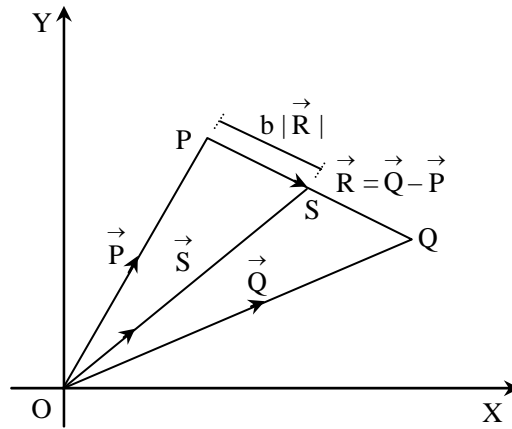
$$\frac{1}{2} m_0 v_s^2 - \frac{Gmm_0}{R} - \frac{G \times 3 \times 10^5 m \times m_0}{2.5 \times 10^4 R} = 0$$

$$\frac{1}{2} v_s^2 = \frac{Gm}{R} + \frac{Gm}{R} \times \frac{30}{2.5}$$

$$\frac{v_s^2}{2} = \frac{Gm}{R} [1 + 12]$$

$$v_s = 11.2 \sqrt{13} = 42 \text{ km/s}$$

Q.7 Three vectors \vec{P} , \vec{Q} and \vec{R} are shown in the figure. Let S be any point on the vector \vec{R} . The distance between the points P and S is $b |\vec{R}|$. The general relation among vectors \vec{P} , \vec{Q} and \vec{S} is



(A) $\vec{S} = (1 - b^2)\vec{P} + b\vec{Q}$

(B) $\vec{S} = (1 - b)\vec{P} + b\vec{Q}$

(C) $\vec{S} = (1 - b)\vec{P} + b^2\vec{Q}$

(D) $\vec{S} = (b - 1)\vec{P} + b\vec{Q}$

Ans. [B]

Sol. $\vec{S} = \vec{P} + b\vec{R}$

$$\vec{S} = \vec{P} + b(\vec{Q} - \vec{P})$$

$$\vec{S} = \vec{P}(1 - b) + b\vec{Q}$$

SECTION – 2 (Maximum Marks : 28)

- The section contains **SEVEN** questions
- Each question has **FOUR** options (A), (B), (C) and (D) . **ONE OR MORE THAN ONE** of these four option(s) is(are) correct.
- For each question, darken the bubble(s) corresponding to all the correct option(s) in the ORS.
- For each question, marks will be awarded in one of the following categories :
 - Full Marks : +4 If only the bubble(s) corresponding to all the correct option(s) is(are) darkened.
 - Partial Marks : +1 For darkening a bubble corresponding **to each correct option**, provided NO incorrect option is darkened
 - Zero Marks : 0 If none of the bubble is darkened.
 - Negative Marks : -2 In all other cases.
- For example, if (A), (C) and (D) are all the correct options for a question, darkening all these three will get +4 marks; darkening only (A) and (D) will get +2 marks; and darkening (A) and (B) will get -2 marks, as a wrong option is also darkened.

Q.8 The instantaneous voltages at three terminals marked X, Y and Z are given by

$$V_X = V_0 \sin \omega t,$$

$$V_Y = V_0 \sin \left(\omega t + \frac{2\pi}{3} \right) \text{ and}$$

$$V_Z = V_0 \sin \left(\omega t + \frac{4\pi}{3} \right)$$

An ideal voltmeter is configured to read *rms* value of the potential difference between its terminals. It is connected between points X and Y and then between Y and Z. The reading (s) of the voltmeter will be

(A) $V_{XY}^{rms} = V_0 \sqrt{\frac{3}{2}}$

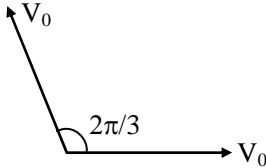
(B) $V_{YZ}^{rms} = V_0 \sqrt{\frac{1}{2}}$

(C) Independent of the choice of the two terminals

(D) $V_{XY}^{rms} = V_0$

Ans. [B,C]

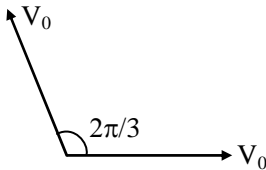
Sol. $V_{xy} = V_x + V_y$



$$V_{net} = V_0$$

$$\therefore V_{xy \text{ rms}} = \frac{V_0}{\sqrt{2}}$$

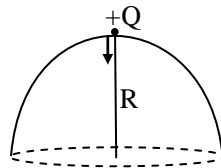
$$V_{yz} = V_y + V_z$$



$$V_{net} = V_0$$

$$V_{yz \text{ rms}} = \frac{V_0}{\sqrt{2}}$$

Q.9 A point charge +Q is placed just outside an imaginary hemispherical surface of radius R as shown in the figure. Which of the following statements is/are Correct?



(A) Total flux through the curved and the flat surfaces is $\frac{Q}{\epsilon_0}$

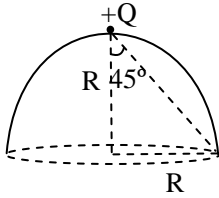
(B) The circumference of the flat surface is an equipotential

(C) The component of the electric field normal to the flat surface is constant over the surface

(D) The electric flux passing through the *curved* surface of the hemisphere is $-\frac{Q}{2\epsilon_0} \left(1 - \frac{1}{\sqrt{2}} \right)$

Ans. [D]

Sol. Lets take a close hemispherical surface of radius R



$$\phi_{\text{total}} = \phi_{\text{curve}} + \phi_{\text{Flat}}$$

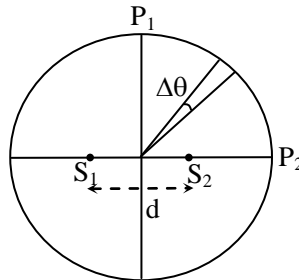
$$0 = \phi_{\text{curve}} + \frac{q}{2\epsilon_0} [1 - \cos 45^\circ]$$

$$\phi_{\text{curve}} = -\frac{q}{2\epsilon_0} \left[1 - \frac{1}{\sqrt{2}} \right]$$

Component of electric field along the curve surface is non zero so curve surface is not equipotential.

Electric field normal component or flat surface not constant

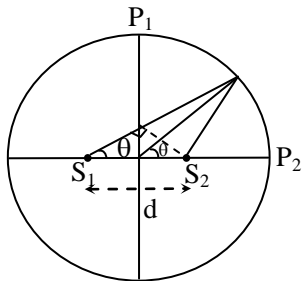
Q.10 Two coherent monochromatic point sources S_1 and S_2 of wavelength $\lambda = 600 \text{ nm}$ are placed symmetrically on either side of the center of the circle as shown. The sources are separated by a distance $d = 1.8 \text{ mm}$. This arrangement produces interference fringes visible as alternate bright and dark spots on the circumference of the circle. The angular separation between two consecutive bright spots is $\Delta\theta$. Which of the following options is/are correct?



- (A) The angular separation between two consecutive bright spots decreases as we move from P_1 to P_2 along the first quadrant
- (B) A dark spot will be formed at the point P_2
- (C) At P_2 the order of the fringe will be maximum
- (D) The total number of fringes produced between P_1 and P_2 in the first quadrant is close to 3000

Ans. [C,D]

Sol.





$$\Delta x = d \cos \theta$$

for constructive interference

$$d \cos \theta = n \lambda$$

$$n = \frac{d \cos \theta}{\lambda}$$

$$n \propto \cos \theta$$

when $\theta \downarrow$ $\cos \theta \uparrow$

and separation between consecutive bright spots increases

For P_2

$$\Delta x = 1.8 \text{ mm}$$

for dark spot

$$\Delta x = (2n-1) \frac{\lambda}{2}$$

$$(2n-1) \frac{\lambda}{2} = 1.8 \text{ mm}$$

$$(2n-1) \frac{600 \times 10^{-9}}{2} = 1.8 \times 10^{-3}$$

$$2n-1 = \frac{3.6 \times 10^{-3}}{600 \times 10^{-9}}$$

$$2n-1 = \frac{36}{600} \times \frac{10^{-3}}{10^{-8}} = 6 \times 10^{-3+6} = 6000$$

$$2n = 6001$$

$$n = \frac{6001}{2}$$

is not a integer. So it is not dark spot

for maxima at P_2

$$n \lambda = \Delta x$$

$$n \ 300 \times 10^{-9} = 1.8 \times 10^{-3}$$

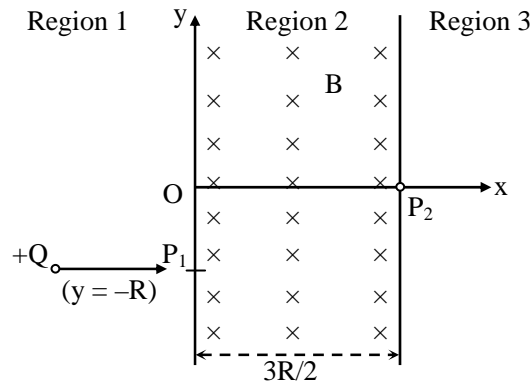
$$n = \frac{1.8 \times 10^{-3}}{300 \times 10^{-9}} = \frac{18}{600} \times \frac{10^{-3}}{10^{-9}} = \frac{18}{6} \times \frac{10^{-3}}{10^{-6}}$$

$$= 3 \times 10^3$$

$$n = 3000$$

So at P it is maxima

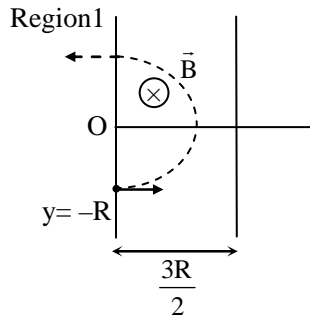
- Q.11** A uniform magnetic field B exists in the region between $x = 0$ and $x = y$ (region 2 in the figure) pointing normally into the plane of the paper. A particle with charge $+Q$ and momentum p directed along x -axis enters region 2 from region 1 at point $P_1(y = -R)$. Which of the following option(s) is/are correct ?



- (A) For a fixed B , particles of same charge Q and same velocity v , the distance between the point P_1 and the point of re-entry into region 1 is inversely proportional to the mass of the particle.
- (B) For $B = \frac{8}{13} \frac{p}{QR}$, the particle will enter region 3 through the point P_2 on x-axis
- (C) When the particle re-enters region 1 through the longest possible path in region 2, the magnitude of the change in its linear momentum between point P_1 and the farthest point from y-axis is $p/\sqrt{2}$
- (D) For $B > \frac{2}{3} \frac{p}{QR}$, the particle will re-enter region 1

Ans. [B,D]

Sol.



$$r = \frac{mv}{qB}$$

The distance of re-entry point from P_1 into region 1 is $2r$

$$d = \frac{2mv}{qB}$$

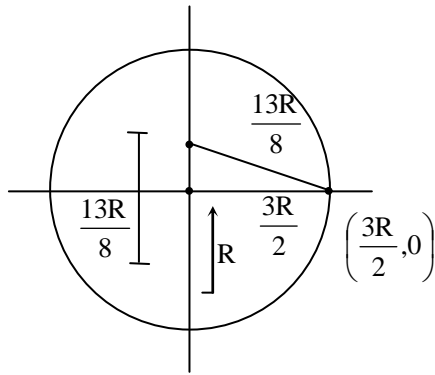
$d \propto m$

$$(b) B = \frac{8p}{13qR}$$

In such case radius of circular part is $r = \frac{p}{qB}$

$$r = \frac{p \times 13qR}{q \times 8p} = \frac{13R}{8} = 1.6 R$$

Which is greater than $\frac{3R}{2}$



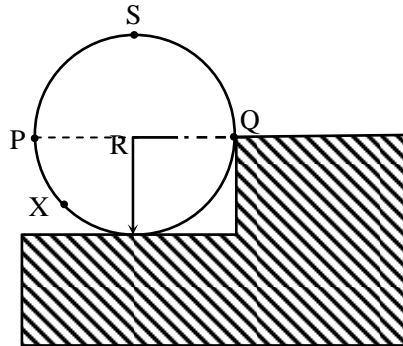
In such case equation of circle is

$$(x - 0)^2 + \left(y - \frac{5R}{8}\right)^2 = \left(\frac{13R}{8}\right)^2$$

Point $P_2 \left(\frac{3R}{2}, 0\right)$ satisfy the above equation

So point P_2 lies on circle

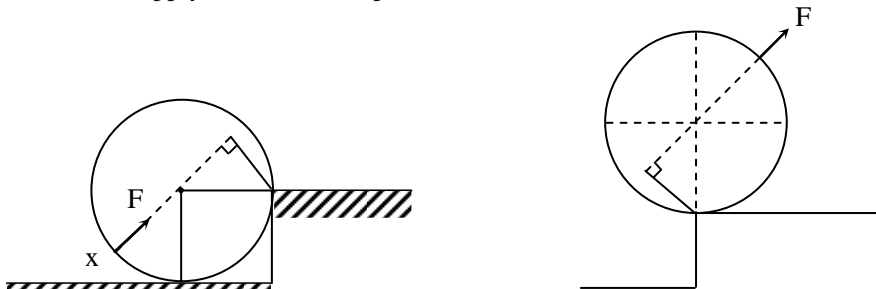
- Q.12** A wheel of radius R and mass M is placed at the bottom of a fixed step of height R as shown in the figure. A constant force is continuously applied on the surface of the wheel so that it just climbs the step without slipping. Consider the torque τ about an axis normal to the plane of the paper passing through the point Q . Which of the following options is/are correct ?



- (A) If the force is applied normal to the circumference at point X then τ is constant
- (B) If the force is applied tangentially at point S then $\tau \neq 0$ but the wheel never climbs the step
- (C) If the force is applied at point P tangentially then τ decreases continuously as the wheel climbs
- (D) If the force is applied normal to the circumference at point P then τ is zero

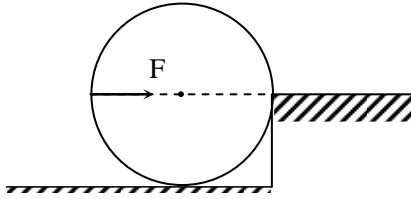
Ans. [A,D]

Sol. When force apply normal to the point x

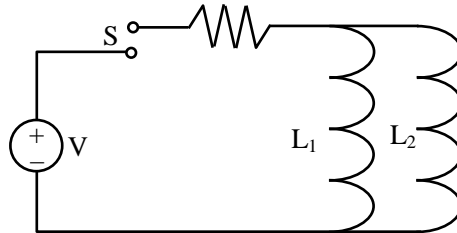


Force and its perpendicular distance of line of action
Remain constant so torque is constant

When force applies normal to point P its line of action always passes through point O so torque is



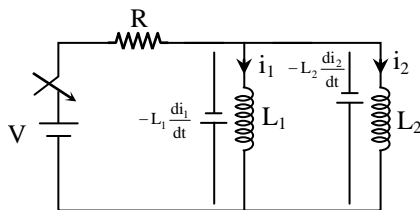
Q.13 A source of constant voltage V is connected to a resistance R and two ideal inductors L_1 and L_2 through a switch S as shown. There is no mutual inductance between the two inductors. The switch S is initially open. At $t = 0$, the switch is closed and current begins to flow. Which of the following options is/are correct ?



- (A) After a long time, the current through L_1 will be $\frac{V}{R} \frac{L_2}{L_1 + L_2}$
- (B) The ratio of the currents through L_1 and L_2 is fixed at all times ($t > 0$)
- (C) After a long time, the current through L_2 will be $\frac{V}{R} \frac{L_1}{L_1 + L_2}$
- (D) At $t = 0$, the current through the resistance R is $\frac{V}{R}$

Ans. [A,B,C]

Sol.



at $t = 0$ No current through the resistor

$$-L_1 \frac{di_1}{dt} = -L_2 \frac{di_2}{dt}$$

$$L_1 di_1 = L_2 di_2$$

$$L_1 i_1 = L_2 i_2$$

$$\frac{i_1}{i_2} = \frac{L_2}{L_1} \text{ (Const.)}$$

After a long time current in Resistor

$$i = \frac{V}{R}$$

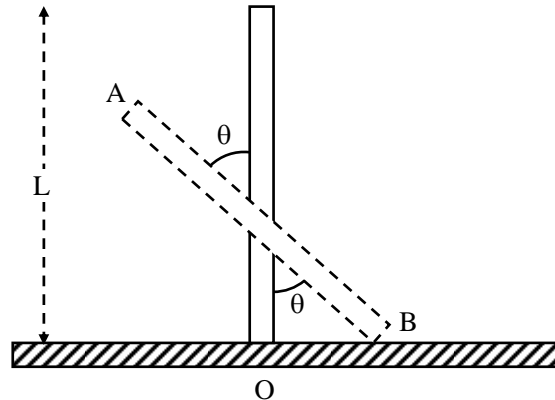
$$i_1 + i_2 = \frac{V}{R}$$

$$i_1 + \frac{L_1}{L_2} i_1 = \frac{V}{R}$$

$$i_1 = \frac{V}{R} \left(\frac{L_2}{L_1 + L_2} \right)$$

$$i_2 = \frac{V}{R} \left(\frac{L_1}{L_1 + L_2} \right)$$

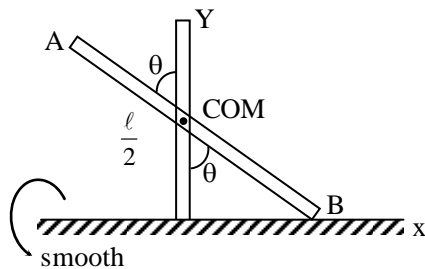
- Q.14** A rigid uniform bar AB of length L is slipping from its vertical position on a frictionless floor (as shown in the figure). At some instant of time, the angle made by the bar with the vertical is θ . Which of the following statements about its motion is/are correct ?



- (A) Instantaneous torque about the point in contact with the floor is proportional to $\sin \theta$
 (B) The trajectory of the point A is a parabola
 (C) The midpoint of the bar will fall vertically downward
 (D) When the bar makes an angle θ with the vertical, the displacement of the its midpoint from the initial position is proportional to $(1 - \cos \theta)$

Ans. [C,D]

Sol.



$$X_A = -\frac{l}{2} \sin \theta$$

$$Y_A = \frac{l}{2} \cos \theta + \frac{l}{2} \cos \theta$$

$$Y_A = l \cos \theta$$

$$\frac{X_A^2}{l^2/4} + \frac{Y_A^2}{l^2} = 1$$

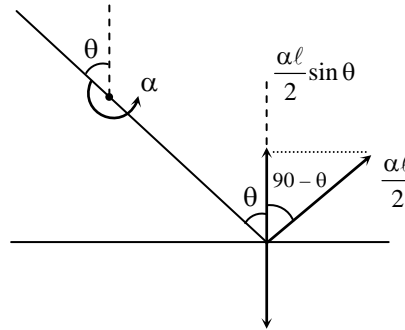
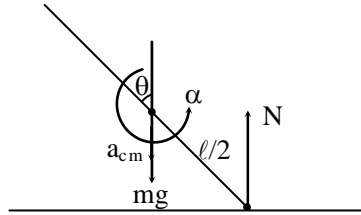
ellipse

COM (mid point) of bar will fall on vertical straight-line (there is no any horizontal force)

$$\text{displacement of mid point} = \frac{\ell}{2} - \frac{\ell}{2} \cos \theta$$

$$= \frac{\ell}{2} (1 - \cos \theta)$$

$$\propto (1 - \cos \theta)$$



wrt to COM

$$N \frac{\ell}{2} \sin \theta = \frac{m \ell^2}{12} \alpha$$

$$mg - N = m a_{cm}$$

$$\frac{\alpha \ell}{2} \sin \theta = a_{cm}$$

$$mg - \frac{m \ell \alpha}{6 \sin \theta} = m \frac{\alpha \ell}{2} \sin \theta$$

$$g = \ell \alpha \left(\frac{1}{6 \sin \theta} + \frac{\sin \theta}{2} \right)$$

$$\alpha = \frac{6g \sin \theta}{\ell (1 + 3 \sin^2 \theta)}$$

About the point which is in contact with ground.

$$\tau = I \alpha$$

$$\tau = \frac{m\ell^2\alpha}{3}$$

$$\tau = \frac{m\ell^2}{3} \left(\frac{6g \sin \theta}{\ell(1 + 3\sin^2 \theta)} \right)$$

$$\tau = \frac{2mg\ell \sin \theta}{(1 + 3\sin^2 \theta)}$$

SECTION – 3 (Maximum Marks : 12)

- This section contains **TWO** paragraphs
- Based on each paragraph, there are **TWO** questions
- Each question has **FOUR** options (A), (B), (C) and (D). **ONLY ONE** of these four options is correct
- For each question, darken the bubble corresponding to the correct option in the ORS
- For each question, marks will be awarded in one of the following categories:

Full Marks : +3 If only the bubble corresponding to the correct option is darkened.

Zero Marks : 0 In all other cases

PARAGRAPH 1

Consider a simple RC circuit as shown in Figure 1.

Process 1 : In the circuit the switch S is closed at $t = 0$ and the capacitor is fully charged to voltage V_0 (i.e., charging continues for time $T \gg RC$). In the process some dissipation (E_D) occurs across the resistance R. The amount of energy finally stored in the fully charged capacitor is E_C .

Process 2 : In a different process the voltage is first set to $\frac{V_0}{3}$ and maintained for a charging time $T \gg RC$.

Then the voltage is raised to $\frac{2V_0}{3}$ without discharging the capacitor and again maintained for a time

$T \gg RC$. The process is repeated one more time by raising the voltage to V_0 and the capacitor is charged to the same final voltage V_0 as in Process 1.

These two processes are depicted in Figure 2.

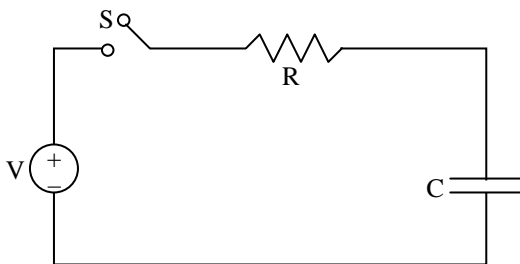


Figure 1

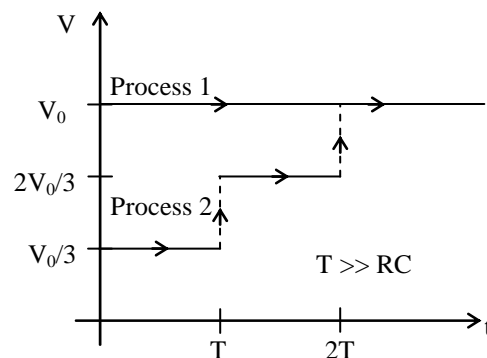


Figure 2

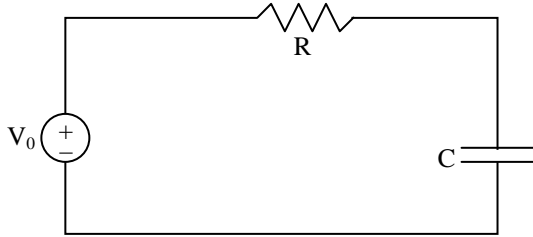


Q.15 In Process 1, the energy stored in the capacitor E_C and heat dissipated across resistance E_D are related by :

- (A) $E_C = E_D \ln 2$
- (B) $E_C = \frac{1}{2} E_D$
- (C) $E_C = E_D$
- (D) $E_C = 2E_D$

Ans. [C]

Sol.



$$U = \frac{q_0^2}{2C} = \text{energy stored}$$

$$E_C = \frac{1}{2} CV_0^2 \quad \dots\dots\dots (1)$$

$$\begin{aligned} \text{Work done by battery} &= q_0 V_0 \\ &= CV_0^2 \end{aligned}$$

$$\therefore \text{heat loss} = CV_0^2 - \frac{q_0^2}{2C}$$

$$= CV_0^2 - \frac{1}{2} CV_0^2$$

$$E_D = \frac{1}{2} CV_0^2 \quad \dots\dots\dots (2)$$

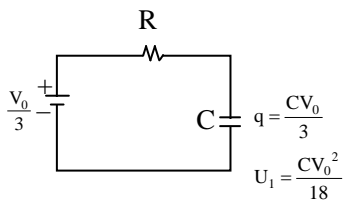
$$\therefore \frac{E_D}{E_C} = \frac{\frac{1}{2} CV_0^2}{\frac{1}{2} CV_0^2} = 1$$

Q.16 In Process 2, total energy dissipated across the resistance E_D is :

- (A) $E_D = \frac{1}{3} \left(\frac{1}{2} CV_0^2 \right)$
- (B) $E_D = 3 \left(\frac{1}{2} CV_0^2 \right)$
- (C) $E_D = \frac{1}{2} CV_0^2$
- (D) $E_D = 3 CV_0^2$

Ans. [A]

Sol.

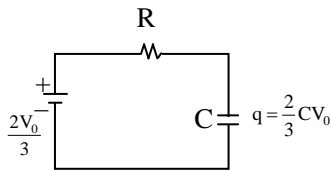


$$\begin{aligned} \text{(battery) } W &= \frac{V_0}{3} \left(\frac{CV_0}{3} \right) \\ &= \frac{CV_0^2}{9} \end{aligned}$$

$$\text{Energy of capacitor} = \frac{CV_0^2}{18}$$

$$\text{Heat loss } E_1 = \frac{CV_0^2}{9} - \frac{CV_0^2}{18}$$

$$E_1 = \frac{1}{18} CV_0^2$$



$$\begin{aligned} U_f &= \frac{q^2}{2C} \\ &= \frac{4}{18} CV_0^2 \end{aligned}$$

$$U_f = \frac{2}{9} CV_0^2$$

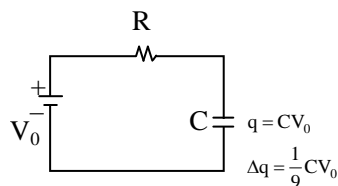
$$\Delta U = \frac{CV_0^2}{6}$$

$$\begin{aligned} \text{(Battery) } W &= \frac{2V_0}{3} \left(\frac{CV_0}{3} \right) \\ &= \frac{2}{9} CV_0^2 \end{aligned}$$

$$\therefore \text{heat loss} = \frac{2}{9} CV_0^2 - \frac{CV_0^2}{6}$$

$$= \frac{3}{54} CV_0^2$$

$$E_2 = \frac{CV_0^2}{18}$$



$$\text{Work done by battery} = V_0 \left(\frac{1}{3} CV_0 \right)$$

$$= \frac{CV_0^2}{3}$$

$$\Delta U = \frac{5}{18} CV_0^2$$

$$\text{Total heat loss } E_3 = \frac{CV_0^2}{3} - \frac{5}{18}CV_0^2$$

$$E_3 = \frac{1}{18}CV_0^2$$

∴ Total heat dissipated

$$\begin{aligned} E &= E_1 + E_2 + E_3 \\ &= \frac{1}{18}CV_0^2 + \frac{1}{18}CV_0^2 + \frac{1}{18}CV_0^2 \\ &= \frac{1}{6}CV_0^2 = \frac{1}{3}\left(\frac{1}{2}CV_0^2\right) \end{aligned}$$

PARAGRAPH 2

One twirls a circular ring (of mass M and radius R) near the tip of one's finger as shown in Figure 1. In the process the finger never loses contact with the inner rim of the ring. The finger traces out the surface of a cone, shown by the dotted line. The radius of the path traced out by the point where the ring and the finger is in contact is r . The finger rotates with an angular velocity ω_0 . The rotating ring rolls without slipping on the outside of a smaller circle described by the point where the ring and the finger is in contact (Figure 2). The coefficient of friction between the ring and the finger is μ and the acceleration due to gravity is g .

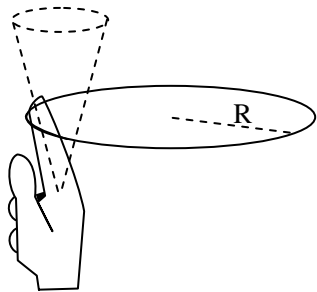


Figure 1

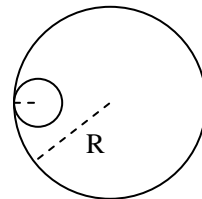


Figure 2

Q.17 The total kinetic energy of the ring is

(A) $M\omega_0^2 (R - r)^2$

(B) $M\omega_0^2 R^2$

(C) $\frac{3}{2} M\omega_0^2 (R - r)^2$

(D) $\frac{1}{2} M\omega_0^2 (R - r)^2$

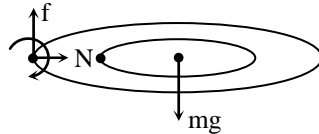
Ans. [A]

Q.18 The minimum value of ω_0 below which the ring will drop down is

- (A) $\sqrt{\frac{2g}{\mu(R-r)}}$ (B) $\sqrt{\frac{3g}{2\mu(R-r)}}$
(C) $\sqrt{\frac{g}{\mu(R-r)}}$ (D) $\sqrt{\frac{g}{2\mu(R-r)}}$

Ans. [C]

Sol.



$$N = m\omega^2 (R - r)$$

$$\tau_N = \tau_{mg}$$

$$\mu\omega^2(R - r) R = mg R$$

$$\omega = \sqrt{\frac{g}{\mu(R - r)}}$$

JEE Advanced | NEET

Day Boarding Coaching Format

LAKSHYA BATCH

For JEE Advanced/ NEET Qualified Students
who wish to Improve Rank

- ⊙ 7am to 7pm batch with systematic day plan
- ⊙ Theory and working both under supervision of Best Faculty Team
- ⊙ Special isolated "Lakshya Zone"

100% Success Rate

Scholarship upto **90%** with Free Hostel

CAREER POINT

PART-II (CHEMISTRY)

SECTION – 1 (Maximum Marks : 21)

- This section contains **SEVEN** questions.
- Each question has **FOUR** options (A), (B), (C) and (D). **ONLY ONE** of these four options is correct.
- For each question, darken the bubble corresponding to the correct option in the ORS.
- For each question, marks will be awarded in one of the following categories:
 - Full Marks : +3 If only the bubble corresponding to the correct option is darkened.
 - Zero Marks : 0 If none of the bubbles is darkened.
 - Negative Marks : -1 In all other cases.

Q.19 Which of the following combination will produce H_2 gas ?

- (A) Cu metal and conc. HNO_3
- (B) Au metal and NaCN (aq) in the presence of air
- (C) Zn metal and NaOH (aq)
- (D) Fe metal and conc. HNO_3

Ans. [C]

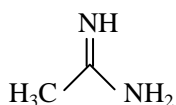
Sol. (A) $Cu + Conc. HNO_3 \longrightarrow Metal\ nitrate + NO_2 + H_2O$

(B) $4Au + 8NaCN \xrightarrow[2H_2O]{O_2} 4Na[Au(CN)_2] + NaOH$

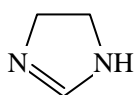
(C) $Zn + 2NaOH \xrightarrow{Aqueous} Na_2ZnO_2 + H_2$

(D) $Fe + conc. HNO_3 \longrightarrow Fe_2O_3$
Protactive layer of any on metal surface

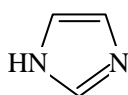
Q.20 The order of basicity among the following compounds is -



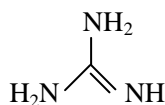
I



II



III



IV

(A) $I > IV > III > II$

(B) $II > I > IV > III$

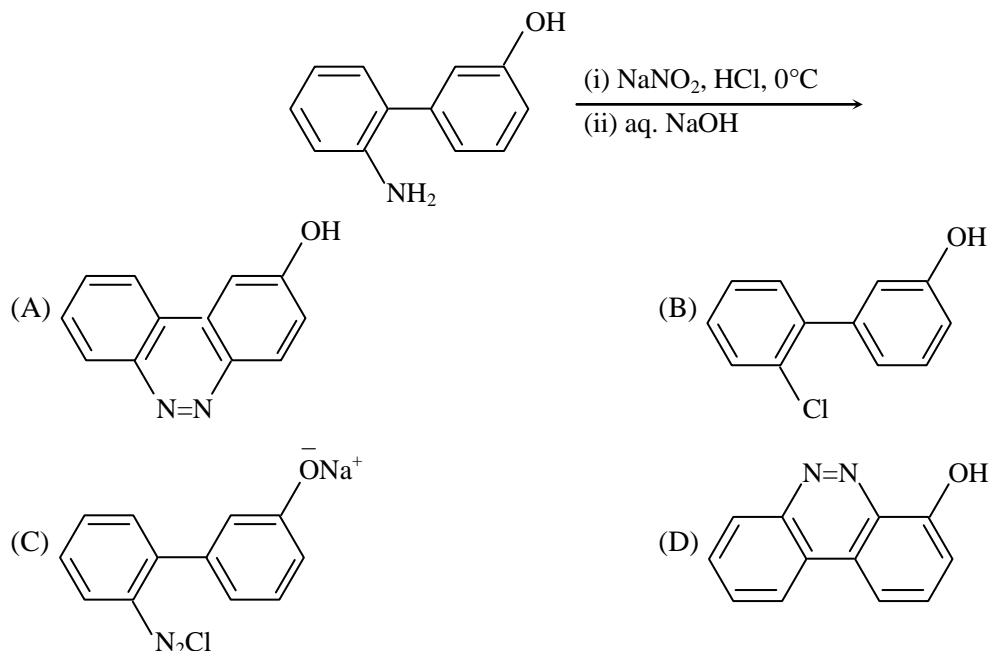
(C) $IV > I > II > III$

(D) $IV > II > III > I$

Ans. [C]

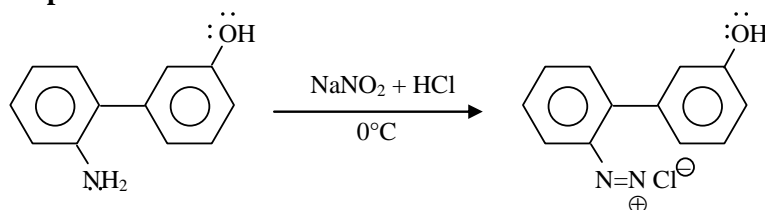
Sol. Order According to value of K_b .

Q.21 The major product of the following reaction is -

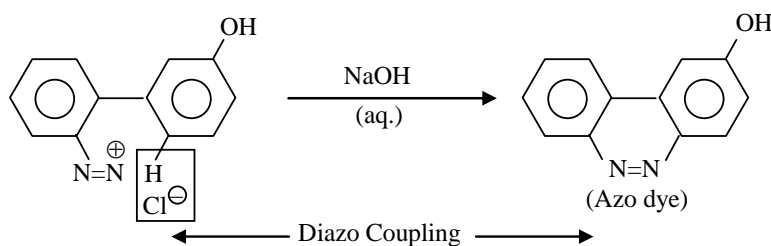


Ans. [A]

Sol. Step- 1



Step- 2



Q.22 For the following cell,



When the concentration of Zn^{2+} is 10 times the concentration of Cu^{2+} , the expression for ΔG (in J mol^{-1}) is

[F is Faraday constant; R is gas constant; T is temperature; E° (cell) = 1.1 V]

- (A) $2.303 RT + 1.1 F$ (B) $2.303RT - 2.2F$ (C) $1.1 F$ (D) $-2.2 F$

Ans. [B]

Sol. $\text{Zn(s)} + \text{Cu}^{+2} \text{ (aq)} \longrightarrow \text{Zn}^{+2} \text{ (aq)} + \text{Cu(s)}$

$$E_{\text{Cu}} = E_{\text{Cu}}^\circ - \frac{0.0591}{n} \log_{10} \frac{[\text{Zn}^{+2}]}{[\text{Cu}^{+2}]}$$

$$[\text{Zn}^{+2}] = 10[\text{Cu}^{+2}]$$

$$E_{\text{Cu}} = 1.1 - \frac{2.303RT}{2F} \log_{10} \frac{10[\text{Cu}^{+2}]}{[\text{Cu}^{+2}]}$$

$$E_{\text{Cu}} = 1.1 - \frac{2.303RT}{2F}$$

$$\Delta G = -nFE_{\text{Cu}}$$

$$= -2F \left[1.1 - \frac{2.303RT}{2F} \right]$$

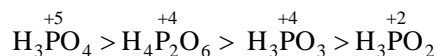
$$\Delta G = 2.303 RT - 2.2 F$$

Q.23 The order of the oxidation state of the phosphorus atom in H_3PO_2 , H_3PO_4 , H_3PO_3 , and $\text{H}_4\text{P}_2\text{O}_6$ is -

- (A) $\text{H}_3\text{PO}_3 > \text{H}_3\text{PO}_2 > \text{H}_3\text{PO}_4 > \text{H}_4\text{P}_2\text{O}_6$ (B) $\text{H}_3\text{PO}_4 > \text{H}_3\text{PO}_2 > \text{H}_3\text{PO}_3 > \text{H}_4\text{P}_2\text{O}_6$
 (C) $\text{H}_3\text{PO}_2 > \text{H}_3\text{PO}_3 > \text{H}_4\text{P}_2\text{O}_6 > \text{H}_3\text{PO}_4$ (D) $\text{H}_3\text{PO}_4 > \text{H}_4\text{P}_2\text{O}_6 > \text{H}_3\text{PO}_3 > \text{H}_3\text{PO}_2$

Ans. [D]

Sol. Oxidation state of phosphorous Atom In - H_3PO_2 ; H_3PO_4 ; H_3PO_3 And $\text{H}_4\text{P}_2\text{O}_6$ is



$$\text{H}_3\text{PO}_2 \Rightarrow +3 + x - 4 = 0, x = +1$$

$$\text{H}_3\text{PO}_4 \Rightarrow +3 + x - 8 = 0, x = +5$$

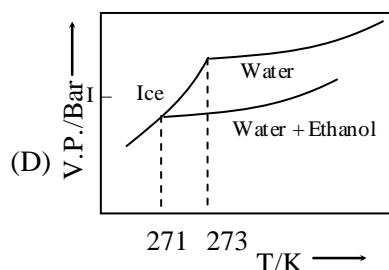
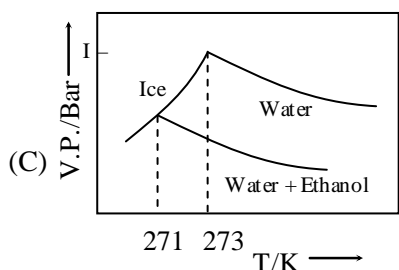
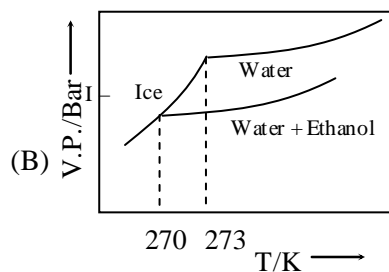
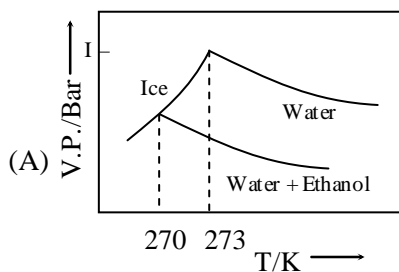
$$\text{H}_3\text{PO}_3 \Rightarrow +3 + x - 6 = 0, x = +3$$

$$\text{H}_4\text{P}_2\text{O}_6 \Rightarrow +4 + 2x - 12 = 0, x = +4$$

Q.24 Pure water freezes at 273 K and 1 bar. The addition of 34.5 g of ethanol to 500 g of water changes the freezing point of the solution. Use the freezing point depression constant of water as 2 K kg mol⁻¹. The figures shown below represent plots of vapour pressure (V.P.) versus temperature (T).

[molecular weight of ethanol is 46 g mol⁻¹].

Among the following, the option representing change in the freezing point is -



Ans. [B]

Sol. $\Delta T_f = i k_f m$
 $= \frac{1 \times 2 \times 34.5 \times 1000}{46 \times 500}$

$$\Delta T_f = 3k$$

$$\Delta T_f = F_p \text{ of solvent} - F_p \text{ of solution}$$

$$3 = 273 - x$$

$$x = 270$$

Q.25 The standard state Gibbs free energies of formation of C (Graphite) and C (diamond) at T = 298 K are

$$\Delta_f G^\circ [\text{C(graphite)}] = 0 \text{ kJ mol}^{-1}$$

$$\Delta_f G^\circ [\text{C(diamond)}] = 2.9 \text{ kJ mol}^{-1}$$

The standard state means that the pressure should be 1 bar, and substance should be pure at a given temperature. The converting of graphite [C(graphite)] to diamond [C(diamond)] reduces its volume by $2 \times 10^{-6} \text{ m}^3 \text{ mol}^{-1}$. If C(graphite) is converted to C(diamond) isothermally at T = 298 K, the pressure at which C(graphite) is in equilibrium with C(diamond), is

[Useful information: $1 \text{ J} = 1 \text{ kg m}^2 \text{ s}^{-2}$; $1 \text{ Pa} = 1 \text{ kg m}^{-1} \text{ s}^{-2}$; $\text{bar} = 10^5 \text{ Pa}$]

(A) 29001 bar

(B) 1450 bar

(C) 14501 bar

(D) 58001 bar

Ans. [C]

Sol. At equilibrium $\Delta G = 0$

$$\Delta G^\circ = dp(\Delta V)$$

$$2.9 \times 10^3 \frac{\text{J}}{\text{mol}} = (P_2 - 1)(2 \times 10^{-6}) \text{ m}^3 \text{ mol}^{-1}$$

$$2.9 \times 10^3 \times \frac{\text{kgm}^2}{\text{s}^2 \text{ mol}} = (P_2 - 1)(2 \times 10^{-6}) \frac{\text{m}^3}{\text{mol}^{-1}}$$

$$P_2 - 1 = \frac{2.9}{2} \times 10^9 \frac{\text{kg}}{\text{ms}^2}$$

$$= 1.45 \times 10^9 + 1 \text{ pa}$$

$$= 14501 \text{ bar}$$

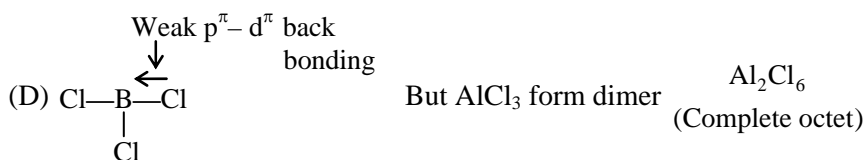
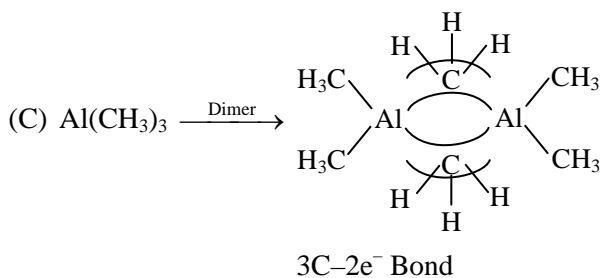
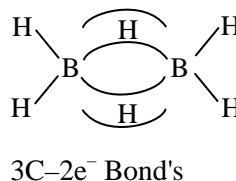
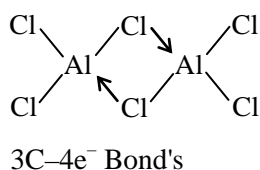
SECTION – 2 (Maximum Marks : 28)

- This section contains **SEVEN** questions
- Each question has **FOUR** options (A), (B), (C) and (D). **ONE OR MORE THAN ONE** of these four option(s) is(are) correct.
- For each question, darken the bubble(s) corresponding to all the correct option(s) in the ORS.
- For each question, marks will be awarded in one of the following categories :
 - Full Marks : +4 If only the bubble(s) corresponding to all the correct option(s) is(are) darkened.
 - Partial Marks : +1 For darkening a bubble corresponding **to each correct option**, provided NO incorrect option is darkened
 - Zero Marks : 0 If none of the bubbles is darkened.
 - Negative Marks : -2 In all other cases.
- For example, if (A), (C) and (D) are all the correct options for a question, darkening all these three will get +4 marks; darkening only (A) and (D) will get +2 marks; and darkening (A) and (B) will get -2 marks, as a wrong option is also darkened.

Q.26 Among the following, the correct statement(s) is(are)

- (A) AlCl_3 has the three-centre two-electron bonds in its dimeric structure
 (B) BH_3 has the three-centre two-electron bonds in its dimeric structure
 (C) $\text{Al}(\text{CH}_3)_3$ has the three-centre two-electron bonds in its dimeric structure
 (D) The Lewis acidity of BCl_3 is greater than that of AlCl_3

Ans. [B, C, D]



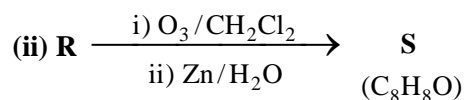
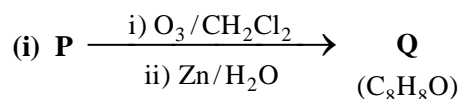
Hence BCl_3 is more acidic than AlCl_3

- Q.27** For a reaction taking place in a container in equilibrium with its surroundings, the effect of temperature on its equilibrium constant K in terms of change in entropy is described by
- (A) With increase in temperature, the value of K for exothermic reaction decreases because the entropy change of the system is positive
- (B) With increase in temperature, the value of K for endothermic reaction increases because the entropy change of the system is negative
- (C) With increase in temperature, the value of K for endothermic reaction increases because unfavourable change in entropy of the surroundings decreases
- (D) With increase in temperature, the value of K for exothermic reaction decreases because favourable change in entropy of the surroundings decreases

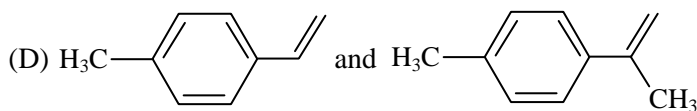
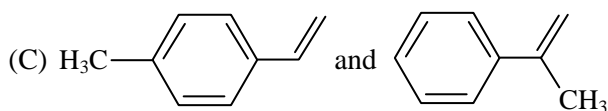
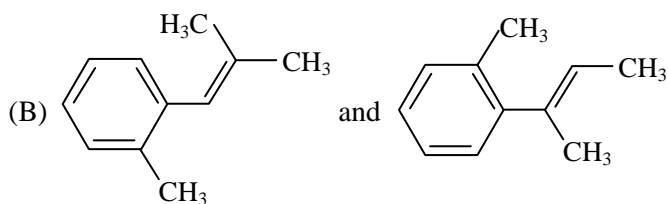
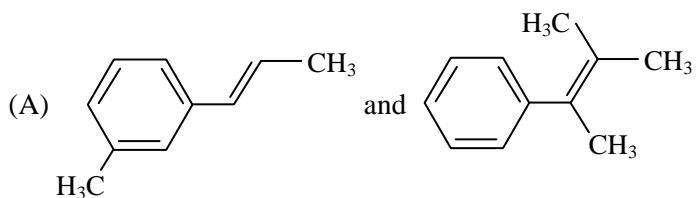
Ans. [C, D]

Sol. Factual

- Q.28** Compounds **P** and **R** upon ozonolysis produce **Q** and **S**, respectively. The molecular formula of **Q** and **S** is C_8H_8O . **Q** undergoes Cannizzaro reaction but not haloform reaction, whereas **S** undergoes haloform reaction but not Cannizzaro reaction.

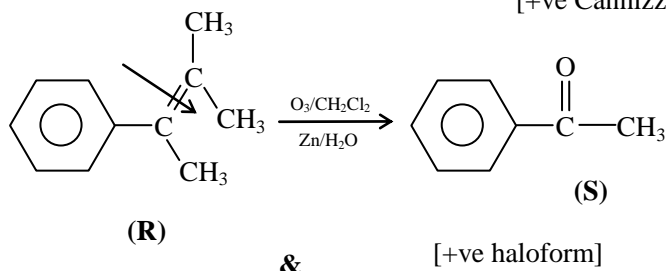
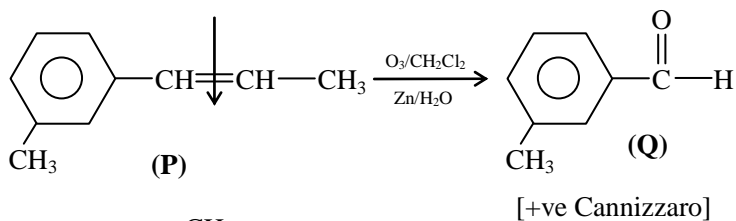


The option(s) with suitable combination of **P** and **R**, respectively, is(are)

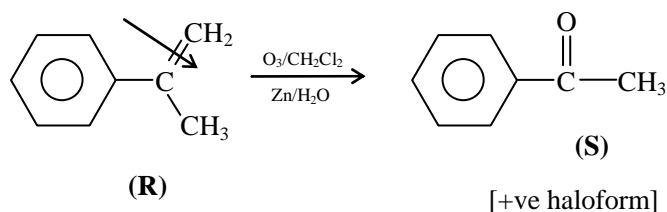
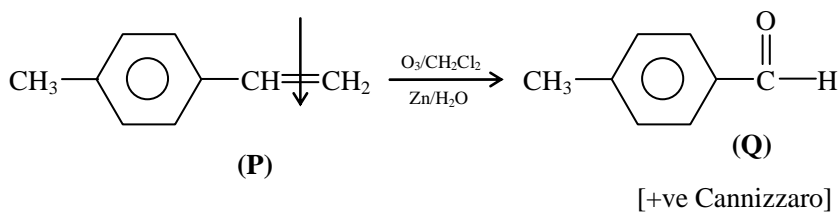


Ans. [A, C]

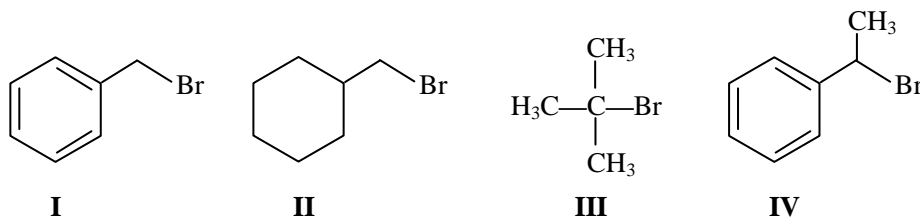
Sol. (A)



(C)



Q.29 For the following compounds, the correct statement(s) with respect to nucleophilic substitution reactions is(are)



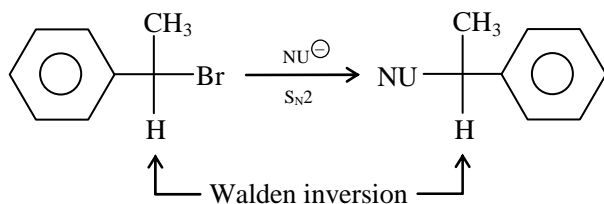
- (A) **I** and **II** follow S_N2 mechanism
- (B) Compound **IV** undergoes inversion of configuration
- (C) The order of reactivity for **I**, **III** and **IV** is: **IV** > **I** > **III**
- (D) **I** and **III** follow S_N1 mechanism

Ans. [A, B, C, D]

Sol. (A) **I** & **II** follow S_N2 mechanism

[Back side attack occurs] (Both are 1° halide S_N2 can occur)

(B) Compound IV under goes inversion of configuration



(C) Order of reactivity is IV > I > III due to stability of intermediate in S_N1 reaction.

(D) I & III follow S_N1 mechanism due to formation of carbocation intermediate.

Q.30 In a bimolecular reaction, the steric factor P was experimentally determined to be 4.5. The correct option(s) among the following is(are)

- (A) The value of frequency factor predicted by Arrhenius equation is higher than that determined experimentally
- (B) Experimentally determined value of frequency factor is higher than that predicted by Arrhenius equation
- (C) The activation energy of the reaction is unaffected by the value of the steric factor
- (D) Since $P = 4.5$, the reaction will not proceed unless an effective catalyst is used

Ans. [B, C]

Sol. Factual

Q.31 The correct statement(s) about surface properties is(are)

- (A) Cloud is an emulsion type of colloid in which liquid is dispersed phase and gas is dispersion medium
- (B) Adsorption is accompanied by decrease in enthalpy and decrease in entropy of the system
- (C) Brownian motion of colloidal particles does not depend on the size of the particles but depends on viscosity of the solution
- (D) The critical temperatures of ethane and nitrogen are 563 K and 126 K, respectively. The adsorption of ethane will be more than that of nitrogen on same amount of activated charcoal at a given temperature

Ans. [B, D]

Sol. Adsorption is exothermic process

$$\Delta H = -ve$$

In adsorption process, randomness of the molecules decreases. So entropy decreases.

Q.32 The option(s) with only amphoteric oxides is(are)

- (A) ZnO, Al_2O_3 , PbO, PbO_2
- (B) Cr_2O_3 , BeO, SnO, SnO_2
- (C) NO, B_2O_3 , PbO, SnO_2
- (D) Cr_2O_3 , CrO, SnO, PbO

Ans. [A, B]

Sol. Amphoteric oxide's are \rightarrow

ZnO, Al_2O_3 , BeO, Cr_2O_3 , GeO PbO/ PbO_2

And SnO/ SnO_2

SECTION – 3 (Maximum Marks : 12)

- **Type instruction**
- This section contains **TWO** paragraphs.
- Based on each paragraph, there are **TWO** questions.
- Each question has **FOUR** options [A], [B],[C] and [D] **ONLY ONE** of these four options is correct
- For each question, darken the bubble corresponding to the correct option in the ORS
- For each question, marks will be awarded in one of the following categories:

Full marks	:	+3	If only the bubble corresponding to the option is darkened
Zero Marks	:	0	In all other cases

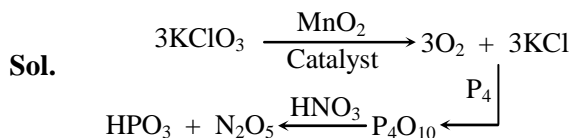
PARAGRAPH 1

Upon heating KClO_3 in the presence of catalytic amount of MnO_2 a gas **W** is formed. Excess amount of **W** reacts with white phosphorus to give **X**. The reaction of **X** with pure HNO_3 gives **Y** and **Z**.

Q.33 **Y** and **Z** are, respectively

- | | |
|--|--|
| (A) N_2O_5 and HPO_3 | (B) N_2O_4 and HPO_3 |
| (C) N_2O_4 and H_3PO_3 | (D) N_2O_3 and H_3PO_4 |

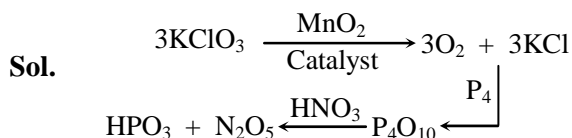
Ans. [A]



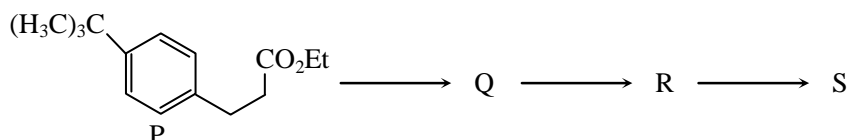
Q.34 **W** and **X** are, respectively

- | | |
|--|---|
| (A) O_3 and P_4O_{10} | (B) O_2 and P_4O_6 |
| (C) O_2 and P_4O_{10} | (D) O_3 and P_4O_6 |

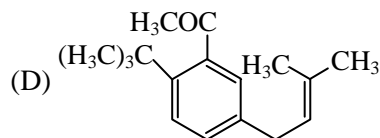
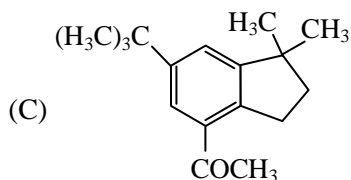
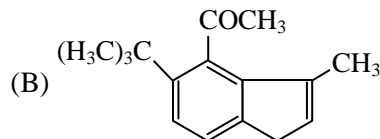
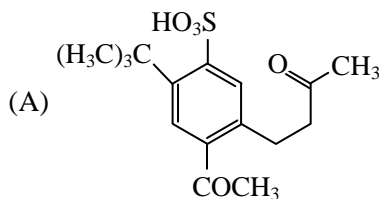
Ans. [C]


PARAGRAPH 2

The reaction of compound **P** with CH_3MgBr (excess) in $(\text{C}_2\text{H}_5)_2\text{O}$ followed by additional of H_2O gives **Q**. The compound **Q** on treatment with H_2SO_4 at 0°C gives **R**. The reaction of **R** with CH_3COCl in the presence of anhydrous AlCl_3 in CH_2Cl_2 followed by treatment with H_2O produces compound **S**. [Et in compound **P** is ethyl group]

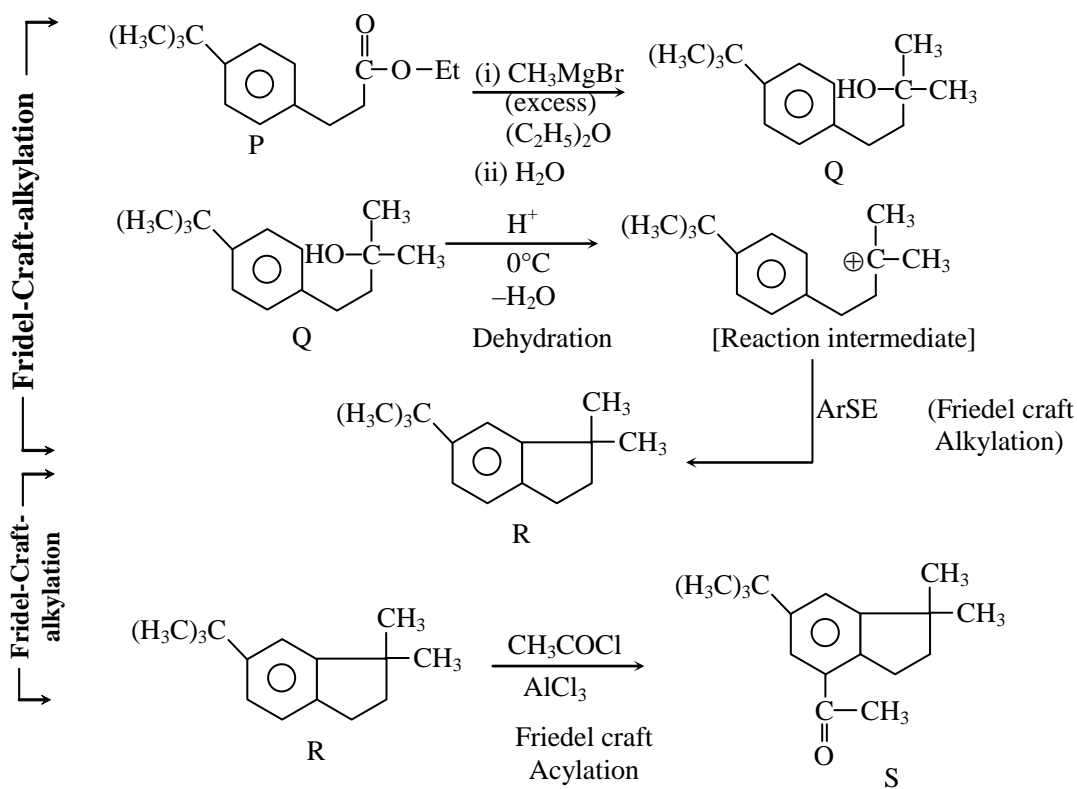


Q.35 The Product **S** is



Ans. [C]

Sol.



Q.36 The reactions, **Q** to **R** and **R** to **S**, are

- (A) Friedel-Craft alkylation and Friedel-Craft acylation
 (B) Friedel-Craft alkylation, dehydration and Friedel-Craft acylation
 (C) Dehydration and Friedel-Craft acylation
 (D) Aromatic sulfonation and Friedel-Craft acylation

Ans. [B]

Sol. Q to R is Friedel-Crafts alkylation and Dehydration [Ar.SE]
R to S is Friedel-Crafts acylation [Ar.SE]

PART-III (MATHEMATICS)**SECTION – 1 (Maximum Marks : 21)**

- The section contains **SEVEN** questions
- Each question has **FOUR** options (A), (B), (C) and (D). **ONLY ONE** of these four options is correct.
- For each question, darken the bubble corresponding to the correct option in the ORS.
- For each question, marks will be awarded in one of the following categories:
Full Marks : +3 If only the bubble corresponding to the correct option is darkened.
Zero Marks : 0 If none of the bubbles is darkened.
Negative Marks : -1 In all other cases.

Q.37 The equation of the plane passing through the point (1, 1, 1) and perpendicular to the planes $2x + y - 2z = 5$ and $3x - 6y - 2z = 7$, is

(A) $14x + 2y + 15z = 31$

(B) $14x - 2y + 15z = 27$

(C) $-14x + 2y + 15z = 3$

(D) $14x + 2y - 15z = 1$

Ans. [A]

Sol. Let the direction ratios of the normal of required plane are a,b,c then

$$2a + b - 2c = 0$$

$$3a - 6b - 2c = 0$$

$$\Rightarrow \frac{a}{-14} = \frac{b}{-2} = \frac{c}{-15} = \lambda$$

$$(a, b, c) = (14\lambda, 2\lambda, 15\lambda)$$

Hence equation of plane will be

$$14(x - 1) + 2(y - 1) + 15(z - 1) = 0$$

$$14x + 2y + 15z - 31 = 0$$

Q.38 How many 3×3 matrices M with entries from $\{0, 1, 2\}$ are there, for which the sum of the diagonal entries of $M^T M$ is 5 ?

(A) 162

(B) 198

(C) 126

(D) 135

Ans. [B]

Sol. Let $M = \begin{bmatrix} a & b & c \\ d & e & f \\ g & h & i \end{bmatrix}$

$$\text{Then } M^T M = \begin{bmatrix} a & d & g \\ b & e & h \\ c & f & i \end{bmatrix} \begin{bmatrix} a & b & c \\ d & e & f \\ g & h & i \end{bmatrix}$$

Sum of the diagonal elements

$$= a^2 + b^2 + c^2 + d^2 + e^2 + f^2 + g^2 + h^2 + i^2 = 5$$

This is possible if 7 of them are 0, 1 is 1 and 1 is 2.



$$\text{Number of cases} = {}^9C_7 \times {}^2C_1 \times {}^1C_1 = 72$$

or 5 of them are 1, 4 of them are 0

$$\text{Number of cases} = {}^9C_5 \times {}^4C_4 = 126$$

$$\text{Total cases} = 198$$

Q.39 Three randomly chosen nonnegative integers x, y and z are found to satisfy the equation $x + y + z = 10$. Then the probability that z is even, is

- (A) $\frac{1}{2}$ (B) $\frac{36}{55}$ (C) $\frac{5}{11}$ (D) $\frac{6}{11}$

Ans. [D]

Sol. $x + y + z = 10$

$$\text{Total cases} = {}^{3+10-1}C_{10} = {}^{12}C_{10} = 66$$

when z is even

Let

$$z = 0 \Rightarrow x + y = 10 \quad \text{Total cases} = 11$$

$$z = 2 \Rightarrow x + y = 8 \quad \text{Total cases} = 9$$

$$z = 4 \Rightarrow x + y = 6 \quad \text{Total cases} = 7$$

$$z = 6 \Rightarrow x + y = 4 \quad \text{Total cases} = 5$$

$$z = 8 \Rightarrow x + y = 2 \quad \text{Total cases} = 3$$

$$z = 10 \Rightarrow x + y = 0 \quad \underline{\text{Total cases} = 1}$$

$$36$$

$$\text{Required probability} = \frac{36}{66} = \frac{6}{11}$$

Q.40 Let O be the origin and let PQR be an arbitrary triangle. The point S is such that

$$\overrightarrow{OP} \cdot \overrightarrow{OQ} + \overrightarrow{OR} \cdot \overrightarrow{OS} = \overrightarrow{OR} \cdot \overrightarrow{OP} + \overrightarrow{OQ} \cdot \overrightarrow{OS} = \overrightarrow{OQ} \cdot \overrightarrow{OR} + \overrightarrow{OP} \cdot \overrightarrow{OS}$$

Then the triangle PQR has S as its

- (A) orthocenter (B) incentre (C) centroid (D) circumcentre

Ans. [A]

Sol. $\overrightarrow{OP} \cdot \overrightarrow{OQ} + \overrightarrow{OR} \cdot \overrightarrow{OS} = \overrightarrow{OR} \cdot \overrightarrow{OP} + \overrightarrow{OQ} \cdot \overrightarrow{OS}$

$$\Rightarrow \overrightarrow{OP} \cdot (\overrightarrow{OQ} - \overrightarrow{OR}) - \overrightarrow{OS} \cdot (\overrightarrow{OQ} - \overrightarrow{OR}) = 0$$

$$(\overrightarrow{OP} - \overrightarrow{OS}) \cdot (\overrightarrow{OQ} - \overrightarrow{OR}) = 0$$

$$\overrightarrow{PS} \cdot \overrightarrow{QR} = 0$$

Similarly $\overrightarrow{QS} \cdot \overrightarrow{PR} = 0$

So, S is the orthocentre

Q.41 If $y = y(x)$ satisfies the differential equation $8\sqrt{x}(\sqrt{9+\sqrt{x}})dy = \left(\sqrt{4+\sqrt{9+\sqrt{x}}}\right)^{-1} dx$, $x > 0$ and

$$y(0) = \sqrt{7}, \text{ then } y(256) =$$

- (A) 3 (B) 9 (C) 16 (D) 80

Ans. [A]

Sol.
$$\int dy = \int \frac{dx}{8\sqrt{x}\sqrt{9+\sqrt{x}}\sqrt{4+\sqrt{9+\sqrt{x}}}}$$

$$\text{Let } \sqrt{9+\sqrt{x}} = t \Rightarrow \frac{1}{2\sqrt{9+\sqrt{x}}} \cdot \frac{1}{2\sqrt{x}} dx = dt$$

$$y = \int \frac{dt}{2\sqrt{4+t}}$$

$$y = \sqrt{(4+t)} + c$$

$$y = \sqrt{4+\sqrt{9+\sqrt{x}}} + c$$

$$\text{as } y(0) = 7 \Rightarrow c = 0$$

$$\therefore y = \sqrt{4+\sqrt{9+\sqrt{x}}}$$

$$\therefore y(256) = 3$$

Q.42 If $f : \mathbb{R} \rightarrow \mathbb{R}$ is a twice differentiable function such that $f''(x) > 0$ for all $x \in \mathbb{R}$ and $f\left(\frac{1}{2}\right) = \frac{1}{2}$, $f(1) = 1$,

then

- (A) $\frac{1}{2} < f'(1) \leq 1$ (B) $f'(1) > 1$ (C) $0 < f'(1) \leq \frac{1}{2}$ (D) $f'(1) \leq 0$

Ans. [B]

Sol. $f''(x) > 0$

$\Rightarrow f'(x)$ is increasing function.

Applying LMVT in $\left[\frac{1}{2}, 1\right]$

$$f'(x) = \frac{f(1) - f\left(\frac{1}{2}\right)}{1 - \frac{1}{2}} = \frac{1 - \frac{1}{2}}{\frac{1}{2}} = 1$$

as $f'(x)$ is increasing

$$f'(x) < f'(1) \quad \forall x \in \left(\frac{1}{2}, 1\right)$$

$$\therefore f'(1) > 1$$



- Q.43** Let $S = \{1, 2, 3, \dots, 9\}$. For $k = 1, 2, \dots, 5$, let N_k be the number of subsets of S , each containing five elements out of which exactly k are odd. Then $N_1 + N_2 + N_3 + N_4 + N_5 =$
- (A) 126 (B) 125 (C) 210 (D) 252

Ans. [A]

Sol. $N_1 = {}^5C_1 \times {}^4C_4 = 5$
 $N_2 = {}^5C_2 \times {}^4C_3 = 40$
 $N_3 = {}^5C_3 \times {}^4C_2 = 60$
 $N_4 = {}^5C_4 \times {}^4C_1 = 20$
 $N_5 = {}^5C_5 = 1$
 $\therefore N_1 + N_2 + N_3 + N_4 + N_5 = 126$

SECTION – 2 (Maximum Marks : 28)

- This section contains **SEVEN** questions
- Each question has **FOUR** options (A), (B), (C) and (D). **ONE OR MORE THAN ONE** of these four option(s) is(are) correct.
- For each question, darken the bubble(s) corresponding to all the correct option(s) in the ORS.
- For each question, marks will be awarded in one of the following categories :
 - Full Marks : +4 If only the bubble(s) corresponding to all the correct option(s) is(are) darkened.
 - Partial Marks : +1 For darkening a bubble corresponding **to each correct option**, provided **NO** incorrect option is darkened
 - Zero Marks : 0 If none of the bubbles is darkened.
 - Negative Marks : -2 In all other cases.
- For example, if (A), (C) and (D) are all the correct options for a question, darkening all these three will get +4 marks; darkening only (A) and (D) will get +2 marks; and darkening (A) and (B) will get -2 marks, as a wrong option is also darkened.

Q.44 If $f(x) = \begin{vmatrix} \cos(2x) & \cos(2x) & \sin(2x) \\ -\cos x & \cos x & -\sin x \\ \sin x & \sin x & \cos x \end{vmatrix}$, then

- (A) $f(x)$ attains its maximum at $x = 0$
 (B) $f'(x) = 0$ at exactly three points in $(-\pi, \pi)$
 (C) $f'(x) = 0$ at more than three points in $(-\pi, \pi)$
 (D) $f(x)$ attains its minimum at $x = 0$

Ans. [A,C]

Sol. $f(x) = \cos 2x + \cos^2 2x - \sin^2 2x$
 $f(x) = \cos 2x + \cos 4x$
 $f'(x) = -2 \sin 2x - 4 \sin 4x$

$$= -2 \sin 2x - 8 \sin 2x \cos 2x$$

$$= -2 \sin 2x (1 + 4 \cos 2x)$$

$$f'(x) = 0$$

$$\sin 2x = 0 \quad \Rightarrow \quad x = -\frac{\pi}{2}, 0, \frac{\pi}{2}$$

$$\text{or} \quad \cos 2x = -\frac{1}{4} \quad \Rightarrow \quad 1 - 2 \sin^2 x = -\frac{1}{4}$$

$$\Rightarrow \quad \sin^2 x = \frac{5}{8}$$

$$\Rightarrow \quad x = \pm \sin^{-1} \sqrt{\frac{5}{8}}, \quad \pi - \sin^{-1} \sqrt{\frac{5}{8}}, \quad -\pi + \sin^{-1} \sqrt{\frac{5}{8}}$$

So, $f'(x) = 0$ at 7 points in $(-\pi, \pi)$

$f(x)$ will attain maximum value at $x = 0$

Q.45 Let $f(x) = \frac{1-x(1+|1-x|)}{|1-x|} \cos\left(\frac{1}{1-x}\right)$ for $x \neq 1$. Then

(A) $\lim_{x \rightarrow 1^-} f(x) = 0$

(B) $\lim_{x \rightarrow 1^+} f(x)$ does not exist

(C) $\lim_{x \rightarrow 1^-} f(x)$ does not exist

(D) $\lim_{x \rightarrow 1^+} f(x) = 0$

Ans. [A, B]

Sol. LHL = $\lim_{x \rightarrow 1^-} f(x)$

$$= \lim_{x \rightarrow 1^-} \frac{1-x(1+(1-x))}{(1-x)} \cos\left(\frac{1}{1-x}\right)$$

$$= \lim_{x \rightarrow 1^-} (1-x) \cos\left(\frac{1}{1-x}\right) = 0$$

RHL = $\lim_{x \rightarrow 1^+} f(x)$

$$= \lim_{x \rightarrow 1^+} \frac{1-x(1+x-1)}{1-x} \cos\left(\frac{1}{1-x}\right)$$

$$= \lim_{x \rightarrow 1^+} (1+x) \cos\left(\frac{1}{1-x}\right)$$

limit does not exist because of non unique value.

Q.46 If $I = \sum_{k=1}^{98} \int_k^{k+1} \frac{k+1}{x(x+1)} dx$, then

(A) $I > \frac{49}{50}$

(B) $I < \log_e 99$

(C) $I > \log_e 99$

(D) $I < \frac{49}{50}$

Ans. [A]

Sol. $x \in (k, k+1)$

$$x > k$$

$$x+1 > k+1$$

$$\frac{1}{x+1} < \frac{1}{k+1}$$

$$\frac{k+1}{x+1} < 1$$

$$\int_k^{k+1} \frac{k+1}{x(x+1)} dx < \int_k^{k+1} \frac{1}{x} dx$$

$$\int_k^{k+1} \frac{k+1}{x(x+1)} dx < \ell n x \Big|_k^{k+1} = \ell n \frac{k+1}{k}$$

$$\sum_{k=1}^{98} \int_k^{k+1} \frac{k+1}{x(x+1)} dx < \sum_{k=1}^{98} \ell n \frac{k+1}{k}$$

$$< \ell n \frac{2}{1} + \ell n \frac{3}{2} + \dots + \ell n \frac{99}{98}$$

$$< \ell n \frac{2}{1} \cdot \frac{3}{2} \dots \frac{99}{98}$$

$$I < \ell n 99$$

$$x < k+1$$

$$\frac{k+1}{x(x+1)} > \frac{k+1}{(k+1)(x+1)} \quad k \leq 98$$

$$\frac{k+1}{x(x+1)} > \frac{1}{x+1} > \frac{1}{100}$$

$$\sum_{k=1}^{98} \int_k^{k+1} \frac{k+1}{x(x+1)} dx > \sum_{k=1}^{98} \int_k^{k+1} \frac{1}{100} dx \Rightarrow I > \frac{1}{100} (98)$$

$$I > \frac{49}{50}$$

Q.47 If $g(x) = \int_{\sin x}^{\sin(2x)} \sin^{-1}(t) dt$, then

(A) $g'\left(\frac{\pi}{2}\right) = -2\pi$

(B) $g'\left(-\frac{\pi}{2}\right) = -2\pi$

(C) $g'\left(\frac{\pi}{2}\right) = 2\pi$

(D) $g'\left(-\frac{\pi}{2}\right) = 2\pi$

Ans. [Bonus]

Sol.
$$g(x) = \int_{\sin x}^{\sin 2x} \sin^{-1} t \, dt$$

$$g'(x) = 2 \cos 2x \sin^{-1}(\sin 2x) - \cos x \sin^{-1}(\sin x)$$

$$g'\left(\frac{\pi}{2}\right) = 2(-1)(0) - 0\left(\frac{\pi}{2}\right) = 0$$

$$g'\left(-\frac{\pi}{2}\right) = 2(-1)(0) - 0\left(-\frac{\pi}{2}\right) = 0$$

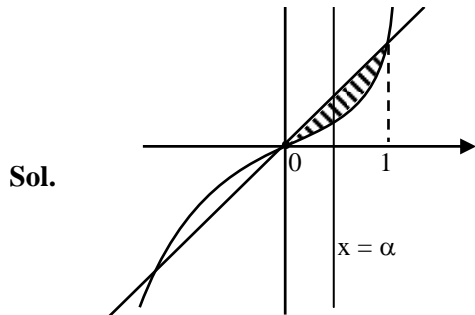
None of the given option is correct.

So Answer Bonus

Q.48 If the line $x = \alpha$ divides the area of region $R = \{(x, y) \in \mathbb{R}^2 : x^3 \leq y \leq x, 0 \leq x \leq 1\}$ into two equal parts, then

- (A) $2\alpha^4 - 4\alpha^2 + 1 = 0$ (B) $\alpha^4 + 4\alpha^2 - 1 = 0$ (C) $\frac{1}{2} < \alpha < 1$ (D) $0 < \alpha \leq \frac{1}{2}$

Ans. [A, C]



$$\int_0^{\alpha} (x - x^3) \, dx = \frac{1}{2} \int_0^1 (x - x^3) \, dx$$

$$\left[\frac{x^2}{2} - \frac{x^4}{4} \right]_0^{\alpha} = \frac{1}{2} \left[\frac{x^2}{2} - \frac{x^4}{4} \right]_0^1$$

$$\Rightarrow \frac{\alpha^2}{2} - \frac{\alpha^4}{4} = \frac{1}{8}$$

$$\Rightarrow 2\alpha^4 - 4\alpha^2 + 1 = 0$$

$$\text{if } \alpha = \frac{1}{2} \text{ then } \int_0^{1/2} (x - x^3) \, dx = \frac{7}{64}$$

which is less than $\frac{1}{8}$

So, $\frac{1}{2} < \alpha < 1$

Q.49 If $f : \mathbb{R} \rightarrow \mathbb{R}$ is a differentiable function such that $f'(x) > 2f(x)$ for all $x \in \mathbb{R}$, and $f(0) = 1$, then

(A) $f(x)$ is decreasing in $(0, \infty)$

(B) $f(x) > e^{2x}$ in $(0, \infty)$

(C) $f'(x) < e^{2x}$ in $(0, \infty)$

(D) $f(x)$ is increasing in $(0, \infty)$

Ans. [B, D]

Sol. $f'(x) > 2f(x)$

$$e^{-2x} f'(x) > 2e^{-2x} f(x)$$

$$\frac{d}{dx}(f(x) \cdot e^{-2x}) > 0$$

$\Rightarrow g(x) = f(x)e^{-2x}$ is increasing function

$$\text{So, } g(x) > g(0) \quad \forall x \in (0, \infty)$$

$$g(x) > f(0)e^{-0} \quad \forall x \in (0, \infty)$$

$$\frac{f(x)}{e^{2x}} > 1 \quad \forall x \in (0, \infty)$$

$$f(x) > e^{2x} \quad \forall x \in (0, \infty)$$

$$f'(x) > 2f(x) > 2e^{2x} > 0 \quad \forall x \in (0, \infty)$$

$$\Rightarrow f'(x) > 0$$

$$\Rightarrow f(x) \text{ is increasing } \forall x \in (0, \infty)$$

Q.50 Let α and β be nonzero real numbers such that $2(\cos \beta - \cos \alpha) + \cos \alpha \cos \beta = 1$. Then which of the following is/are true ?

(A) $\tan\left(\frac{\alpha}{2}\right) + \sqrt{3} \tan\left(\frac{\beta}{2}\right) = 0$

(B) $\tan\left(\frac{\alpha}{2}\right) - \sqrt{3} \tan\left(\frac{\beta}{2}\right) = 0$

(C) $\sqrt{3} \tan\left(\frac{\alpha}{2}\right) - \tan\left(\frac{\beta}{2}\right) = 0$

(D) $\sqrt{3} \tan\left(\frac{\alpha}{2}\right) + \tan\left(\frac{\beta}{2}\right) = 0$

Ans. [A, B]

Sol. $2(\cos \beta - \cos \alpha) + \cos \alpha \cos \beta = 1$

$$\Rightarrow 2 \left[\frac{1 - \tan^2 \frac{\beta}{2}}{1 + \tan^2 \frac{\beta}{2}} - \frac{1 - \tan^2 \frac{\alpha}{2}}{1 + \tan^2 \frac{\alpha}{2}} \right] = 1 - \frac{\left(1 - \tan^2 \frac{\alpha}{2}\right) \left(1 - \tan^2 \frac{\beta}{2}\right)}{\left(1 + \tan^2 \frac{\alpha}{2}\right) \left(1 + \tan^2 \frac{\beta}{2}\right)}$$

$$\Rightarrow 4 \left(\tan^2 \frac{\alpha}{2} - \tan^2 \frac{\beta}{2} \right) = 2 \left(\tan^2 \frac{\alpha}{2} + \tan^2 \frac{\beta}{2} \right)$$

$$\Rightarrow \tan^2 \frac{\alpha}{2} = 3 \tan^2 \frac{\beta}{2}$$

$$\Rightarrow \tan \frac{\alpha}{2} = \pm \sqrt{3} \tan \frac{\beta}{2}$$

SECTION – 3 (Maximum Marks : 12)

- This section contains **TWO** paragraphs.
- Based on each paragraph, there are **TWO** questions.
- Each question has **FOUR** options (A), (B), (C) and (D). **ONLY ONE** of these four options is correct.
- For each question, darken the bubble corresponding to the correct option in the **ORS**.
- For each question, marks will be awarded in one of the following categories :
 Full Marks : +3 If only the bubble corresponding to the correct option is darkened.
 Zero Marks : 0 In all other cases.

PARAGRAPH # 1

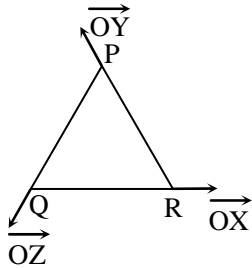
Let O be the origin, and $\vec{OX}, \vec{OY}, \vec{OZ}$ be three unit vectors in the directions of the sides $\vec{QR}, \vec{RP}, \vec{PQ}$, respectively, of a triangle PQR.

Q.51 $|\vec{OX} \times \vec{OY}| =$

- (A) $\sin 2R$ (B) $\sin (P + R)$ (C) $\sin (Q + R)$ (D) $\sin (P + Q)$

Ans. [D]

Sol.



$$\begin{aligned}
 |\vec{OX} \times \vec{OY}| &= |\vec{OX}| |\vec{OY}| \sin R \\
 &= \sin R \\
 &= \sin (180 - (P + Q)) = \sin (P + Q)
 \end{aligned}$$

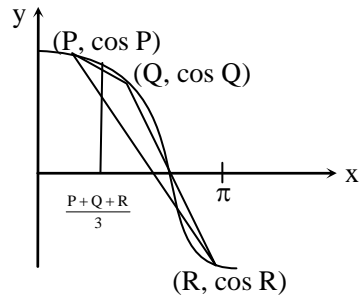
Q.52 If the triangle PQR varies, then the minimum value of $\cos(P + Q) + \cos(Q + R) + \cos(R + P)$ is

- (A) $-\frac{3}{2}$ (B) $\frac{5}{3}$ (C) $-\frac{5}{3}$ (D) $\frac{3}{2}$

Ans. [A]

Sol.

$$\begin{aligned}
 &\cos(P+Q) + \cos(Q+R) + \cos (R+P) \\
 &= -\cos R - \cos P - \cos Q \\
 &= -(\cos P + \cos Q + \cos R)
 \end{aligned}$$



$$\cos\left(\frac{P+Q+R}{3}\right) > \frac{\cos P + \cos Q + \cos R}{3}$$

$$\frac{3}{2} > \cos P + \cos Q + \cos R$$

$$-(\cos P + \cos Q + \cos R) > -\frac{3}{2}$$

$$\text{So minimum value} = -\frac{3}{2}$$

PARAGRAPH # 2

Let p, q be integers and let α, β be the roots of the equation, $x^2 - x - 1 = 0$, where $\alpha \neq \beta$. For $n = 0, 1, 2, \dots$, let $a_n = p\alpha^n + q\beta^n$.

FACT : If a and b are rational numbers and $a + b\sqrt{5} = 0$, then $a = 0 = b$.

Q.53 If $a_4 = 28$, then $p + 2q =$

(A) 14

(B) 12

(C) 7

(D) 21

Ans. [B]

Sol. $\alpha = \frac{1+\sqrt{5}}{2}, \quad \beta = \frac{1-\sqrt{5}}{2}$

$$\Rightarrow \alpha^2 = \frac{3+\sqrt{5}}{2}, \quad \beta^2 = \frac{3-\sqrt{5}}{2}$$

$$\Rightarrow \alpha^4 = \frac{7+3\sqrt{5}}{2}, \quad \beta^4 = \frac{7-3\sqrt{5}}{2}$$

Now, $a_4 = 28$

$$p\alpha^4 + q\beta^4 = 28$$

$$p\left(\frac{7+3\sqrt{5}}{2}\right) + q\left(\frac{7-3\sqrt{5}}{2}\right) = 28$$

$$(7p+7q) + 3\sqrt{5}(p-q) = 56$$

$$\therefore 7p+7q = 56 \text{ and } p-q = 0$$

$$\therefore p = q = 4$$

$$\therefore p + 2q = 12$$

Q.54 $a_{12} =$
 (A) $a_{11} - a_{10}$ (B) $a_{11} + a_{10}$ (C) $a_{11} + 2a_{10}$ (D) $2a_{11} + a_{10}$

Ans. [B]

Sol. $a_n = 4(\alpha^n + \beta^n)$
 $a_1 = 4(\alpha + \beta) = 4$
 $a_2 = 4(\alpha^2 + \beta^2) = 4[(\alpha + \beta)^2 - 2\alpha\beta] = 12$
 $a_3 = 4(\alpha^3 + \beta^3) = 4[(\alpha + \beta)^3 - 3\alpha\beta(\alpha + \beta)] = 16$
 $a_4 = 28$ (given)
 $\therefore a_n = a_{n-1} + a_{n-2}$
 $\therefore a_{12} = a_{11} + a_{10}$



Admission Announcement Session 2017-18

JEE Advanced | JEE Main | NEET | Pre-Foundation [5th to 10th | NTSE | Olympiad]

Regular Coaching [Kota & all Centres]

JEE Advanced JEE Main Pre-Medical Pre-Foundation	
Course Name	Classes From
⊙ Pre-Foundation Course [For 5 th to 10 th NTSE Olympiad]	26 June 2017
⊙ Foundation/ Nurture Course [For Class 11 th]	29 May 2017 12 June 2017
⊙ Fresher/ Enthuse Course [For Class 12 th]	15 May 2017 12 June 2017
⊙ Target/ Achiever Course [For 12 th Appeared/pass]	29 May 2017 12 June 2017

Residential Coaching [Kota & Mohali]

CAREER POINT gurukul Coaching + School + Hostel & all Facilities within Campus

World-class residential coaching with school & hostel in 20 acres of lush green campus, provides best education in safe & conducive environment.

Admission Open

- ⊙ 6th to 10th + NTSE + Olympiad
- ⊙ 11th + JEE/ NEET
- ⊙ 12th + JEE/ NEET
- ⊙ Target/Achiever for JEE/ NEET [12th pass]

Distance Learning

Distance & e-Learning Program

- ⊙ Study Material Package (7th to 12th/pass)
- ⊙ Video Lectures on Pen Drive & SD Card (Subject & Topic Wise)
- ⊙ Online Test Series (ots.careerpoint.ac.in)
- ⊙ CP Publication (Books for JEE, NEET, KVPY & Olympiad)
- ⊙ Smart Learning Classes (Video Lectures Library)

For details Call: 0744-5151200 or visit www.careerpoint.ac.in

Scholarship upto 90% + Free Hostel

➤ Based on in Scholarship Test (CP-SAT) or Marks in Class 10th/12th or JEE/ NEET/ NTSE/ Olympiad/ KVPY etc.

Scholarship Test 21st & 28th May 2017