

# Question Paper Preview

**Question Paper Name:** Pharmacy 10th May 2017 Shift 1  
**Subject Name:** Pharmacy

Pharmacy  
Display Number Panel: Yes  
Group All Questions: No

**Question Number : 1 Question Id : 254528481 Display Question Number : Yes Single Line Question Option : No Option Orientation : Vertical**

\_\_\_\_\_ is used in the treatment of rheumatoid arthritis:

**Options :**

1. Rosin
2. Myrrh
3. Storax
4. Indian olibanum

**Question Number : 2 Question Id : 254528482 Display Question Number : Yes Single Line Question Option : No Option Orientation : Vertical**

Ergot is produced during

**Options :**

1. honey dew stage
2. sclerotium stage
3. ascopore stage
4. sphacelia stage

**Question Number : 3 Question Id : 254528483 Display Question Number : Yes Single Line Question Option : No Option Orientation : Vertical**

Identification test for Ergot alkaloids is

**Options :**

1. Nessler's test
2. Van urk's test
3. Thalleioquin test
4. Vitalimorin test

**Question Number : 4 Question Id : 254528484 Display Question Number : Yes Single Line Question Option : No Option Orientation : Vertical**

Plasmid in general is

**Options :**

1. a type of virus

2. a type of bacteria
3. the genetic material of virus
4. a circular DNA in certain bacteria

**Question Number : 5 Question Id : 254528485 Display Question Number : Yes Single Line Question Option : No Option Orientation : Vertical**

Haploid plantlets are produced by

**Options :**

1. Embryo culture
2. Meristem culture
3. Endosperm culture
4. Pollen culture

**Question Number : 6 Question Id : 254528486 Display Question Number : Yes Single Line Question Option : No Option Orientation : Vertical**

The bactericidal principle present in Gynocardia oil is

**Options :**

1. Balsamic acid
2. Benzoic acid
3. Commiphoric acid
4. Chaulmoogric acid

**Question Number : 7 Question Id : 254528487 Display Question Number : Yes Single Line Question Option : No Option Orientation : Vertical**

Calcareous, acidic soil with traces of Manganese is suitable for the cultivation of

**Options :**

1. Dioscorea
2. Digitalis
3. Dill
4. Datura

**Question Number : 8 Question Id : 254528488 Display Question Number : Yes Single Line Question Option : No Option Orientation : Vertical**

Which of the following drug does not belong to umbelliferae family?

**Options :**

1. Fennel
2. Anise
3. Ajowan
4. Myrobalan

**Question Number : 9 Question Id : 254528489 Display Question Number : Yes Single Line Question Option : No Option Orientation : Vertical**

Butenolide is present in \_\_\_\_\_ .

**Options :**

1. Scillaren A
2. Scillaridin
3. Ouabaigenin
4. Diosgenin

**Question Number : 10 Question Id : 254528490 Display Question Number : Yes Single Line Question Option : No Option Orientation : Vertical**

Which of the following is used in preparation of Absorbent cotton?

**Options :**

1. Dilute Sulphuric acid
2. Dilute Soda solution
3. Dilute NaCl solution
4. Dilute Acetic acid

**Question Number : 11 Question Id : 254528491 Display Question Number : Yes Single Line Question Option : No Option Orientation : Vertical**

\_\_\_\_\_ is a high intensity sweetener.

**Options :**

1. Sucrose
2. Glucose
3. Monellin
4. Mannitol

**Question Number : 12 Question Id : 254528492 Display Question Number : Yes Single Line Question Option : No Option Orientation : Vertical**

The percentage of fats and bitter indole alkaloid content in Nuxvomica

**Options :**

1. 3.0% and 1.5 to 10%
2. 3.0% and 1.5 to 5%
3. 5.0% and 1.5 to 10%
4. 5.0% and 1.5 to 5%

**Question Number : 13 Question Id : 254528493 Display Question Number : Yes Single Line Question Option : No Option Orientation : Vertical**

Microscopy of Cinnamomum zeylanicum shows the presence of

**Options :**

1. Rosette calcium oxalate crystals
2. minute needles of calcium oxalate crystals
3. crystal sheath of calcium oxalate
4. Acicular prismatic crystals of calcium oxalate

**Question Number : 14 Question Id : 254528494 Display Question Number : Yes Single Line Question Option : No Option Orientation : Vertical**

Jute fibre is obtained from

**Options :**

1. Linum species
2. Antheraea species
3. Corchorus species
4. Gossipium species

**Question Number : 15 Question Id : 254528495 Display Question Number : Yes Single Line Question Option : No Option Orientation : Vertical**

The enzyme contain without odour is

**Options :**

1. Trypsin
2. Papain
3. Renin
4. Pancreatin

**Question Number : 16 Question Id : 254528496 Display Question Number : Yes Single Line Question Option : No Option Orientation : Vertical**

Basic ring present in pilocarpine is

**Options :**

1. Tetrahydrofuran and indole
2. Tetrahydrofuran and imidazole
3. Tetrahydrofuran and Pyrrole
4. Tetrahydrofuran and Pyrimidine

**Question Number : 17 Question Id : 254528497 Display Question Number : Yes Single Line Question Option : No Option Orientation : Vertical**

Heroin is

**Options :**

1. diacetyl morphine
2. diethyl morphine
3. dimethyl morphine
4. dihydro codeine

**Question Number : 18 Question Id : 254528498 Display Question Number : Yes Single Line Question Option : No Option Orientation : Vertical**

Metabolism of paracetamol occurs by

**Options :**

1. Glucuronide and Glycine
2. Glucuronide and Sulphate
3. Glutathione and Glycine
4. Glutathione and sulphate

**Question Number : 19 Question Id : 254528499 Display Question Number : Yes Single Line Question Option : No Option Orientation : Vertical**

Doxorubicin is

**Options :**

1. Antimetabolite anticancer agent
2. Inhibitor of thymidylate synthase
3. Anthracycline antineoplastic antibiotic
4. An inhibitor of microtubule elongation.

**Question Number : 20 Question Id : 254528500 Display Question Number : Yes Single Line Question Option : No Option Orientation : Vertical**

Amoxicillin and potassium clavulanate combination is used because

**Options :**

1. the combination is effective against beta lactamase releasing strains
2. the combination results in prolonged duration of action.
3. the combination results in synergistic action

4. the combination is acid stable and orally effective.

**Question Number : 21 Question Id : 254528501 Display Question Number : Yes Single Line Question Option : No Option Orientation : Vertical**

Substituting methyl group at N1 position in barbiturates leads to

**Options :**

1. increase in lipid solubility
2. decreased toxicity
3. increased activity
4. no change in activity

**Question Number : 22 Question Id : 254528502 Display Question Number : Yes Single Line Question Option : No Option Orientation : Vertical**

Selective  $\alpha_1$  agonist is

**Options :**

1. Methoxamine
2. Naphazoline
3. Clonidine
4. Oxymetazoline

**Question Number : 23 Question Id : 254528503 Display Question Number : Yes Single Line Question Option : No Option Orientation : Vertical**

Limit test for arsenic is based on

**Options :**

1. Gutzeit test
2. Biuret test
3. Black water test
4. Volhards test

**Question Number : 24 Question Id : 254528504 Display Question Number : Yes Single Line Question Option : No Option Orientation : Vertical**

Presence of \_\_\_\_\_ group is essential for antibacterial activity of macrolides.

**Options :**

1. Methoxy
2. Amino
3. Dimethyl amine
4. Methyl amine

**Question Number : 25 Question Id : 254528505 Display Question Number : Yes Single Line Question Option : No Option Orientation : Vertical**

Prodrug of 5-fluorouracil is

**Options :**

1. Cytrabine
2. Tegafur
3. Vidrabine
4. Azaserine

**Question Number : 26 Question Id : 254528506 Display Question Number : Yes Single Line Question Option : No Option Orientation : Vertical**

The ion responsible for activating the enzymes involved in carbohydrate metabolism is

**Options :**

1. sodium
2. potassium
3. chloride
4. magnesium

**Question Number : 27 Question Id : 254528507 Display Question Number : Yes Single Line Question Option : No Option Orientation : Vertical**

Drug that inhibit Acetylcholine Synthesis is

**Options :**

1. Vesamicoll
2. Botulinum
3. Atropine
4. Ipratropium bromide

**Question Number : 28 Question Id : 254528508 Display Question Number : Yes Single Line Question Option : No Option Orientation : Vertical**

An acyclic 2-deoxyguanosine derivative which is a prodrug that gets activated through phosphorylation in the viral infected cells is

**Options :**

1. Indinavir
2. Zidovudine
3. Acyclovir
4. Nystatin

**Question Number : 29 Question Id : 254528509 Display Question Number : Yes Single Line Question Option : No Option Orientation : Vertical**

The anti-TB drug Bedaquiline acts by

**Options :**

1. Inhibiting ATP synthase enzyme
2. Inhibiting DNA gyrase enzyme
3. Inhibiting TMPK<sub>mT</sub> enzyme
4. Inhibiting Shikimate kinase enzyme

**Question Number : 30 Question Id : 254528510 Display Question Number : Yes Single Line Question Option : No Option Orientation : Vertical**

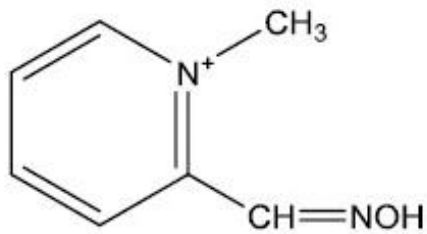
Which of the following drug combination is used for the treatment of diabetic foot disease?

**Options :**

1. Sulbactam + Tazobactam
2. Tazobactam + Piperacillin
3. Sulbactam + Piperacillin
4. Clavulanic acid + Amoxicillin

**Question Number : 31 Question Id : 254528511 Display Question Number : Yes Single Line Question Option : No Option Orientation : Vertical**

Identify the drug given below



Options :

1. Pralidoxime
2. Hyoscyamine
3. Benztropine
4. Clnidium

Question Number : 32 Question Id : 254528512 Display Question Number : Yes Single Line Question Option : No Option Orientation : Vertical

Sanger's reagent is

Options :

1. 2, 4-dinitrofluorobenzene
2. Ninhydrin
3. Barium hydroxide
4. Cyclic diamine

Question Number : 33 Question Id : 254528513 Display Question Number : Yes Single Line Question Option : No Option Orientation : Vertical

Basic nucleus present in vitamin C is

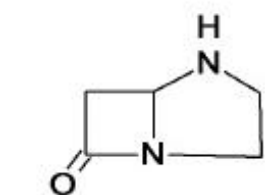
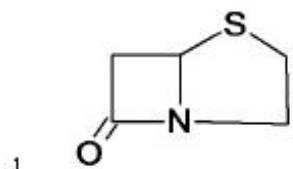
Options :

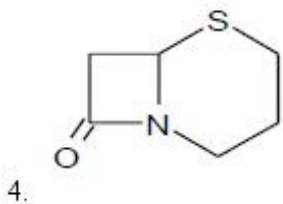
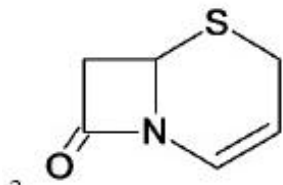
1. thizole
2. cyclobutane
3. furanone
4. benzoxazole

Question Number : 34 Question Id : 254528514 Display Question Number : Yes Single Line Question Option : No Option Orientation : Vertical

Cephalosporins contain which of the following moiety?

Options :





**Question Number : 35 Question Id : 254528515 Display Question Number : Yes Single Line Question Option : No Option Orientation : Vertical**

Local anaesthetic injection given at epidural space is

**Options :**

1. Prilocaine
2. Benzocaine
3. Amethocaine
4. Bupivacaine

**Question Number : 36 Question Id : 254528516 Display Question Number : Yes Single Line Question Option : No Option Orientation : Vertical**

Magnesium trisilicate is also called as

**Options :**

1. Light Magnesia
2. Epson Salt
3. Heavy Magnesia
4. Sodium Perbor

**Question Number : 37 Question Id : 254528517 Display Question Number : Yes Single Line Question Option : No Option Orientation : Vertical**

Which isomer of chloramphenicol is active among the following?

**Options :**

1. D-Erythro
2. L-Erythro
3. D-Threo
4. L-Threo

**Question Number : 38 Question Id : 254528518 Display Question Number : Yes Single Line Question Option : No Option Orientation : Vertical**

Mechanism of action of Isocarboxazide is

**Options :**

1. Serotonin reuptake inhibitor
2. Para amino benzoic acid inhibitor
3. Mono amino oxidase inhibitor
4. NE reuptake inhibitor

**Question Number : 39 Question Id : 254528519 Display Question Number : Yes Single Line Question Option : No Option Orientation : Vertical**



In dentrifices anticaries agent is

**Options :**

1. sodium perborate
2. Zinc chloride
3. sodium fluoride
4. calcium carbonate

**Question Number : 40 Question Id : 254528520 Display Question Number : Yes Single Line Question Option : No Option Orientation : Vertical**

Kjheldal method is used for the estimation of

**Options :**

1. organic nitrogen
2. sulphates
3. carbonates
4. phosphates

**Question Number : 41 Question Id : 254528521 Display Question Number : Yes Single Line Question Option : No Option Orientation : Vertical**

The injection of gum saline contains

**Options :**

1. acacia and potassium chloride
2. sodium chloride and agar
3. acacia and sodium chloride
4. tragacanth and sodium chloride

**Question Number : 42 Question Id : 254528522 Display Question Number : Yes Single Line Question Option : No Option Orientation : Vertical**

If Volume of distribution is increased \_\_\_\_\_ also increases.

**Options :**

1. AUC
2. clearance
3. Cmax
4. Tmax

**Question Number : 43 Question Id : 254528523 Display Question Number : Yes Single Line Question Option : No Option Orientation : Vertical**

Castor oil can be used as

**Options :**

1. anti bacterial agent
2. anti foaming agent
3. wetting agent
4. dispersing agent

**Question Number : 44 Question Id : 254528524 Display Question Number : Yes Single Line Question Option : No Option Orientation : Vertical**

The length of a line that bisects the particle image observed in optical microscope is known as

**Options :**

1. optical diameter
2. martins diameter

3. feret diameter
4. projected diameter

**Question Number : 45 Question Id : 254528525 Display Question Number : Yes Single Line Question Option : No Option Orientation : Vertical**

Which of the following materials are termed as shear thickening systems?

**Options :**

1. Plastic
2. Dilatant
3. Pseudo plastic
4. Pseudo metallic

**Question Number : 46 Question Id : 254528526 Display Question Number : Yes Single Line Question Option : No Option Orientation : Vertical**

If a drug has half life of 5 hrs, what is the last time point of collection of urine sample for sigma minus method of analysis?

**Options :**

1. 5 hrs
2. 35 hrs
3. 25 hrs
4. 20 hrs

**Question Number : 47 Question Id : 254528527 Display Question Number : Yes Single Line Question Option : No Option Orientation : Vertical**

Which of the following statement is true?

**Options :**

1. Acidic drugs are less soluble in alkaline solutions than in acidic solutions
2. basic drugs are more soluble in alkaline solutions than in acidic solutions
3. the zwitterions of an amphoteric drug has a higher solubility than the acidic or basic forms of the drug
4. the effective net charge on the zwitterions is zero at the isoelectric point

**Question Number : 48 Question Id : 254528528 Display Question Number : Yes Single Line Question Option : No Option Orientation : Vertical**

Which of the following equipment is used to determine the particle size by the gravity sedimentation method?

**Options :**

1. Pyknometer
2. Ostwald meter
3. Anderasen apparatus
4. friabilator

**Question Number : 49 Question Id : 254528529 Display Question Number : Yes Single Line Question Option : No Option Orientation : Vertical**

Which of the following statement is true with respect to oil soluble surfactants?

**Options :**

1. they have high HLB values
2. they are amphiphilic
3. they are used as emulsifiers to produce water - in - oil emulsions
4. they are efficient solubilizing agents

Question Number : 50 Question Id : 254528530 Display Question Number : Yes Single Line Question Option : No Option Orientation : Vertical

The drugs which undergo active transport and follow non linear kinetics show decreased \_\_\_\_\_ with increased dose.

Options :

1.  $V_d$
2.  $Cl$
3.  $F$
4.  $K_{el}$

Question Number : 51 Question Id : 254528531 Display Question Number : Yes Single Line Question Option : No Option Orientation : Vertical

Paraben esters of p-hydroxybenzoic acid are still popular as preservatives because

Options :

1. they are highly soluble in water
2. they are highly effective against gram negative bacteria
3. they have less interaction with non-ionic surfactants
4. they have low toxicity

Question Number : 52 Question Id : 254528532 Display Question Number : Yes Single Line Question Option : No Option Orientation : Vertical

Critical temperature is

Options :

1. above which a liquid can no longer exist
2. below which liquid can no longer exist
3. at which the three phases of substance co-exist
4. equal to 0 K temp

Question Number : 53 Question Id : 254528533 Display Question Number : Yes Single Line Question Option : No Option Orientation : Vertical

In capsule filling, ROTOFIL equipment is used for filling of

Options :

1. powders
2. liquids containing small amount of solids
3. corrosive liquids
4. pellets

Question Number : 54 Question Id : 254528534 Display Question Number : Yes Single Line Question Option : No Option Orientation : Vertical

Which of the following is a weak electrolyte?

Options :

1. Glucose
2. Urea
3. Ephedrine
4. Sodium chloride

Question Number : 55 Question Id : 254528535 Display Question Number : Yes Single Line Question Option : No Option Orientation : Vertical

In LAL test \_\_\_\_\_ cells are used for the detection of pyrogens.

Options :

1. plasma
2. lymphocytes
3. human red blood
4. amoebocytes

**Question Number : 56 Question Id : 254528536 Display Question Number : Yes Single Line Question Option : No Option Orientation : Vertical**

Hydrogen bonds have a bond energy of about:

**Options :**

1. 2 to 8 kcal/ mole
2. 50 to 60 kcal/ mole
3. 100 to 110 kcal/mole
4. 0.1 to 0.5 kcal/mole

**Question Number : 57 Question Id : 254528537 Display Question Number : Yes Single Line Question Option : No Option Orientation : Vertical**

Whiskering is observed with the use of which of the following punches?

**Options :**

1. Convex
2. Flat
3. Concave
4. Beveled edge

**Question Number : 58 Question Id : 254528538 Display Question Number : Yes Single Line Question Option : No Option Orientation : Vertical**

Which of the following compound has six points for attachment to the metal ion in complex formation and is accordingly hexaaddentate?

**Options :**

1. Pilocarpine
2. Ethylenediaminetetraacetic acid
3. Chlorophyll
4. Hemoglobin

**Question Number : 59 Question Id : 254528539 Display Question Number : Yes Single Line Question Option : No Option Orientation : Vertical**

The HLB range of an emulsifier employed in the preparation of water-in-oil emulsion

**Options :**

1. 1 to 2
2. 3 to 6
3. 7 to 12
4. 13 to 15

**Question Number : 60 Question Id : 254528540 Display Question Number : Yes Single Line Question Option : No Option Orientation : Vertical**

Creatinine clearance is used as a measurement of

**Options :**

1. Renal excretion rate
2. Glomerular filtration rate
3. Active renal secretion

4. Drug metabolism rate

**Question Number : 61 Question Id : 254528541 Display Question Number : Yes Single Line Question Option : No Option Orientation : Vertical**

Which of the following is not a characteristic feature of the small intestine?

**Options :**

1. large surface area
2. good blood flow
3. the epithelium is dominated by mucus secreting cells rather than absorptive cells
4. slow peristaltic movement

**Question Number : 62 Question Id : 254528542 Display Question Number : Yes Single Line Question Option : No Option Orientation : Vertical**

The general acid base reaction belongs to which class of complex reaction?

**Options :**

1. Series
2. Parallel
3. Reversible
4. Consecutive

**Question Number : 63 Question Id : 254528543 Display Question Number : Yes Single Line Question Option : No Option Orientation : Vertical**

Lugol's solution contains 5% of iodine. How much of Lugol's solution is administered to a patient thrice daily to provide 60 mg of iodine?

**Options :**

1. 0.2 ml
2. 0.3 ml
3. 0.4 ml
4. 0.5 ml

**Question Number : 64 Question Id : 254528544 Display Question Number : Yes Single Line Question Option : No Option Orientation : Vertical**

Which of the following is an alternative to whole blood in treatment of severe burns and scalds?

**Options :**

1. Dried human serum
2. Concentrated human RBC
3. Human plasma proteins fraction
4. Reconstituted plasma

**Question Number : 65 Question Id : 254528545 Display Question Number : Yes Single Line Question Option : No Option Orientation : Vertical**

The biological half life of a drug:

**Options :**

1. is a constant physical property of the drug
2. is a constant chemical property of the drug
3. may be increased in patients with impaired renal function
4. may be decreased by giving the drug by rapid intra venous injection.

**Question Number : 66 Question Id : 254528546 Display Question Number : Yes Single Line Question Option : No Option Orientation : Vertical**

What type of filler that cannot be used for the preparation of tablets for amine containing basic drugs to avoid discolouration of the tablets?

Options :

1. Starch
2. Lactose
3. MCC
4. Dicalcium phosphate

Question Number : 67 Question Id : 254528547 Display Question Number : Yes Single Line Question Option : No Option Orientation : Vertical

In a rotary tablet press, the upper as well as lower punches are connected by

Options :

1. Cams
2. Turrets
3. Wire meshes
4. Revolving belts

Question Number : 68 Question Id : 254528548 Display Question Number : Yes Single Line Question Option : No Option Orientation : Vertical

The surface tension for pure water in a capillary tube experiment is determined by

Options :

1.  $\frac{3g}{2hr}$
2.  $\frac{3}{hr \rho g}$
3.  $\frac{r\rho g}{2h}$
4.  $\frac{hr\rho g}{2}$

Question Number : 69 Question Id : 254528549 Display Question Number : Yes Single Line Question Option : No Option Orientation : Vertical

Choose the one, which is not used as plasticizer in nail lacquers?

Options :

1. Dibutyl phthalate
2. Dibutyl glycollate
3. Butyl acetyl ricinoleate
4. Carbitol

Question Number : 70 Question Id : 254528550 Display Question Number : Yes Single Line Question Option : No Option Orientation : Vertical

Dextran, plasma substitute, is prepared in anaerobic fermentation process using \_\_\_\_\_ microorganism.

Options :

1. Leuconostoc mesenteroides

2. Staphylococcus aureus
3. Bacillus stearothermophilus
4. Clostridium tetani

**Question Number : 71 Question Id : 254528551 Display Question Number : Yes Single Line Question Option : No Option Orientation : Vertical**

Under which of the following schedule, drugs cannot be imported?

**Options :**

1. Schedule J
2. Schedule C
3. Schedule C1
4. Schedule X

**Question Number : 72 Question Id : 254528552 Display Question Number : Yes Single Line Question Option : No Option Orientation : Vertical**

Name and concentration of preservative should be written on the label of \_\_\_\_\_ .

**Options :**

1. contraceptives
2. ophthalmic preparations
3. veterinary drugs
4. psychotropic drugs

**Question Number : 73 Question Id : 254528553 Display Question Number : Yes Single Line Question Option : No Option Orientation : Vertical**

Which of the following is the appropriate labeling requirement for a oral drug product containing olive oil, vitamin A and water?

**Options :**

1. Keep in the refrigerator
2. No preservatives added
3. Schedule G
4. Shake well before use

**Question Number : 74 Question Id : 254528554 Display Question Number : Yes Single Line Question Option : No Option Orientation : Vertical**

No repacking license is issued to \_\_\_\_\_ drugs.

**Options :**

1. Schedule G
2. Schedule H
3. Schedule J
4. Schedule C

**Question Number : 75 Question Id : 254528555 Display Question Number : Yes Single Line Question Option : No Option Orientation : Vertical**

Which temperature condition is required for storing polio vaccine for 2 years?

**Options :**

1. 20° C
2. 4° C
3. -5° C
4. -20° C

**Question Number : 76 Question Id : 254528556 Display Question Number : Yes Single Line Question Option : No Option Orientation : Vertical**

What is the effect of UV absorption when acidic sample is dissolved in basic solvent?

**Options :**

1. Bathochromic shift and hyperchromic effect
2. Hypsochromic shift and hypochromic effect
3. Bathochromic shift and hypochromic effect
4. Hypsochromic shift and hyperchromic effect

**Question Number : 77 Question Id : 254528557 Display Question Number : Yes Single Line Question Option : No Option Orientation : Vertical**

Arrange the following solvents in increasing order of elution strength for reverse phase HPLC

**Options :**

1. Water, Methanol, Acetonitrile, Tetrahydrofuran
2. Tetrahydrofuran, Acetonitrile, Methanol, Water
3. Water, Methanol, Tetrahydrofuran , Acetonitrile
4. Acetonitrile, Tetrahydrofuran , Methanol, Water

**Question Number : 78 Question Id : 254528558 Display Question Number : Yes Single Line Question Option : No Option Orientation : Vertical**

Calibration of absorbance for UV-Visible spectrophotometer is done by

**Options :**

1. Potassium chloride
2. Holmium perchlorate
3. Potassium dichromate
4. Toluene

**Question Number : 79 Question Id : 254528559 Display Question Number : Yes Single Line Question Option : No Option Orientation : Vertical**

The assay method for Vitamin-A in capsules according to IP-2014 is

**Options :**

1. UV Spectroscopy
2. Non-aqueous titration
3. RP-HPLC
4. GLC

**Question Number : 80 Question Id : 254528560 Display Question Number : Yes Single Line Question Option : No Option Orientation : Vertical**

UV cut off point for methanol solvent is

**Options :**

1. 190 nm
2. 210 nm
3. 225 nm
4. 245 nm

**Question Number : 81 Question Id : 254528561 Display Question Number : Yes Single Line Question Option : No Option Orientation : Vertical**

Spraying reagent that can be used for detection of barbiturates is

**Options :**



1. Antimony trichloride
2. Diphenyl carbazone
3. Ninhydrin
4. Aniline pthalate

**Question Number : 82 Question Id : 254528562 Display Question Number : Yes Single Line Question Option : No Option Orientation : Vertical**

Which of the following technique is useful for analysis of organic solvents?

**Options :**

1. Column Chromatography
2. TLC
3. GC
4. HPLC

**Question Number : 83 Question Id : 254528563 Display Question Number : Yes Single Line Question Option : No Option Orientation : Vertical**

1 nanometer is equal to

**Options :**

1.  $10^{-6}$  cm
2.  $10^{-7}$  cm
3.  $10^{-8}$  cm
4.  $10^{-9}$  cm

**Question Number : 84 Question Id : 254528564 Display Question Number : Yes Single Line Question Option : No Option Orientation : Vertical**

The error which is inherently included in the principle of the assay is \_\_\_\_\_ .

**Options :**

1. random error
2. procedural error
3. methodic error
4. reagent error

**Question Number : 85 Question Id : 254528565 Display Question Number : Yes Single Line Question Option : No Option Orientation : Vertical**

Which of the following is an example of pyroelectric substance?

**Options :**

1. Sodium chloride
2. Potassium bromide
3. Lithium tantalate
4. Phosphomolibdotungstate

**Question Number : 86 Question Id : 254528566 Display Question Number : Yes Single Line Question Option : No Option Orientation : Vertical**

Bulk property detectors in HPLC can be exemplified by

**Options :**

1. Photodiode Array Detector (PDAD)
2. Refractive Index Detector (RID)
3. Fluorimetric Detector (FD)

4. Electrochemical Detector (ECD)

**Question Number : 87 Question Id : 254528567 Display Question Number : Yes Single Line Question Option : No Option Orientation : Vertical**

The unit of specific conductivity is \_\_\_\_\_.

**Options :**

1. ohms
2. mhos
3. mhos/cm
4. ohms/cm

**Question Number : 88 Question Id : 254528568 Display Question Number : Yes Single Line Question Option : No Option Orientation : Vertical**

A chromatographic technique which can resolve different polymers based on their molecular size is:

**Options :**

1. Ion exchange
2. Gel Permeation
3. Gel Filtration
4. Electrophoresis

**Question Number : 89 Question Id : 254528569 Display Question Number : Yes Single Line Question Option : No Option Orientation : Vertical**

Transmittance is the ratio of intensity of \_\_\_\_\_.

**Options :**

1. incident light to transmitted light
2. transmitted light to incident light
3. incident light to absorbed light
4. absorbed light to transmitted light

**Question Number : 90 Question Id : 254528570 Display Question Number : Yes Single Line Question Option : No Option Orientation : Vertical**

Which one of the following techniques is not an absorption method?

**Options :**

1. IR Spectroscopy
2. UV Spectroscopy
3. Raman Spectrometry
4. Spectrofluorimetry

**Question Number : 91 Question Id : 254528571 Display Question Number : Yes Single Line Question Option : No Option Orientation : Vertical**

Which of the following anion has the highest equivalent conductivity?

**Options :**

1. Cl<sup>-</sup>
2. Br<sup>-</sup>
3. I<sup>-</sup>
4. OH<sup>-</sup>

**Question Number : 92 Question Id : 254528572 Display Question Number : Yes Single Line Question Option : No Option Orientation : Vertical**

According to IP ammonium chloride assay is done by \_\_\_\_\_ titrimetry.

**Options :**

1. Non aqueous
2. Complexometry
3. Redox
4. Precipitation

**Question Number : 93 Question Id : 254528573 Display Question Number : Yes Single Line Question Option : No Option Orientation : Vertical**

Indicator used in Mohr's method

**Options :**

1. Methelene Blue
2. Potassium Chromate
3. Phenolphthalein
4. Mordant Black -II

**Question Number : 94 Question Id : 254528574 Display Question Number : Yes Single Line Question Option : No Option Orientation : Vertical**

Potassium chloride salt bridge is used to \_\_\_\_\_.

**Options :**

1. create junction potential
2. eliminates poisoning effects
3. helps in equilibrium
4. eliminate junction potential

**Question Number : 95 Question Id : 254528575 Display Question Number : Yes Single Line Question Option : No Option Orientation : Vertical**

Auxiliary chelating agent used to estimate selective metal ion in a mixture is known as

**Options :**

1. Masking agent
2. Demasking agent
3. Localizing agent
4. De localizing agent

**Question Number : 96 Question Id : 254528576 Display Question Number : Yes Single Line Question Option : No Option Orientation : Vertical**

Cyclohexane can be used as a solvent in UV spectroscopic analysis as

**Options :**

1. Energy requirement for  $\sigma\text{-}\sigma^*$  is in the range of 120-200 nm
2. It has ring structure
3. It is volatile
4. It is immiscible with water

**Question Number : 97 Question Id : 254528577 Display Question Number : Yes Single Line Question Option : No Option Orientation : Vertical**

In isocratic elution technique, the ratio of petroleum ether and benzene should be in

**Options :**

1. 1:1
2. 1:2

3. 2:1

4. 3:1

**Question Number : 98 Question Id : 254528578 Display Question Number : Yes Single Line Question Option : No Option Orientation : Vertical**

The percentage Relative standard deviation (RSD) for precision should not be more than

**Options :**

1. 1

2. 1.5

3. 2

4. 5

**Question Number : 99 Question Id : 254528579 Display Question Number : Yes Single Line Question Option : No Option Orientation : Vertical**

A Conductivity Cell Consists of

**Options :**

1. Two Platonized platinum electrodes

2. A platinum Calomel Electrode system

3. A Platinum tungsten electrode system

4. A glass Calomel Electrode system

**Question Number : 100 Question Id : 254528580 Display Question Number : Yes Single Line Question Option : No Option Orientation : Vertical**

Eosin is the indicator used in \_\_\_\_\_ method of titration.

**Options :**

1. Fagan's

2. Gabriel's

3. Fischer's

4. Sanger's

**Question Number : 101 Question Id : 254528581 Display Question Number : Yes Single Line Question Option : No Option Orientation : Vertical**

Which of the following drug is used for treating both Cardiac arrhythmias and Epilepsy?

**Options :**

1. Carbamazepine

2. Lidocaine

3. Phenytoin

4. Quinidine

**Question Number : 102 Question Id : 254528582 Display Question Number : Yes Single Line Question Option : No Option Orientation : Vertical**

Which of the following is an orally effective long acting opioid antagonist?

**Options :**

1. Nalorphine

2. Naltrexone

3. Naloxone

4. Tramadol

**Question Number : 103 Question Id : 254528583 Display Question Number : Yes Single Line Question Option : No Option Orientation : Vertical**

Which of the following Dopamine pathway is associated with Parkinsonism?

**Options :**

1. Mesolimbic
2. Nigrostriatal
3. Mesocortical
4. Tuberoinfundibular

**Question Number : 104 Question Id : 254528584 Display Question Number : Yes Single Line Question Option : No Option Orientation : Vertical**

Which of the following local anaesthetic is more cardiotoxic?

**Options :**

1. Procaine
2. Cocaine
3. Lidocaine
4. Bupivacaine

**Question Number : 105 Question Id : 254528585 Display Question Number : Yes Single Line Question Option : No Option Orientation : Vertical**

Which of the following is used as a respiratory stimulant?

**Options :**

1. Morphine
2. Alcohol
3. Doxapram
4. Codeine

**Question Number : 106 Question Id : 254528586 Display Question Number : Yes Single Line Question Option : No Option Orientation : Vertical**

'Drug efficacy' refers to:

**Options :**

1. the range of diseases in which the drug is beneficial
2. the maximal intensity of response that can be produced by the drug
3. the dose of the drug needed to produce half maximal effect
4. the dose of the drug needed to produce therapeutic effect

**Question Number : 107 Question Id : 254528587 Display Question Number : Yes Single Line Question Option : No Option Orientation : Vertical**

Select the antiparkinsonian drug which directly activates dopaminergic D<sub>2</sub> receptors in the striatum

**Options :**

1. Pramipexole
2. Entacapone
3. Benserazide
4. Selegiline

**Question Number : 108 Question Id : 254528588 Display Question Number : Yes Single Line Question Option : No Option Orientation : Vertical**

The drug of choice for trigeminal neuralgia is

**Options :**

1. Aspirin
2. Imipramine
3. Carbamazepine
4. Valproic acid

**Question Number : 109 Question Id : 254528589 Display Question Number : Yes Single Line Question Option : No Option Orientation : Vertical**

Beta blocker used in hyperthyroidism

**Options :**

1. Propranolol
2. Metoprolol
3. Timolol
4. Atenolol

**Question Number : 110 Question Id : 254528590 Display Question Number : Yes Single Line Question Option : No Option Orientation : Vertical**

Budesonide is a

**Options :**

1. Nonsteroidal antiinflammatory drug
2. High ceiling diuretic
3. Inhaled corticosteroid for asthma
4. Contraceptive

**Question Number : 111 Question Id : 254528591 Display Question Number : Yes Single Line Question Option : No Option Orientation : Vertical**

When starting an HIV infected patient on highly active antiretroviral therapy that contains efavirenz, which of the following would be most important to counsel the patient on?

**Options :**

1. Efavirenz should not be taken with a high fat meal as it can increase its absorption in the GI tract and cause some CNS side effects
2. Efavirenz is associated with the development of painful peripheral neuropathy in some patients
3. Efavirenz is a strong inhibitor of enzymes needed by other medications, thereby increasing the risk for drug-drug interactions
4. Efavirenz can cause a yellow of the skin in about 10% of patients but is not harmful

**Question Number : 112 Question Id : 254528592 Display Question Number : Yes Single Line Question Option : No Option Orientation : Vertical**

Select the drug which is a potassium channel opener as well as nitric oxide donor

**Options :**

1. Diazoxide
2. Sodium nitroprusside
3. Minoxidil
4. Nicorandil

**Question Number : 113 Question Id : 254528593 Display Question Number : Yes Single Line Question Option : No Option Orientation : Vertical**

Which of the following actions of adrenaline is not mediated by  $\beta$  receptors?

**Options :**

1. Dilatation of blood vessels
2. Dilatation of pupil

3. Bronchodilation
4. Renin release from kidney

**Question Number : 114 Question Id : 254528594 Display Question Number : Yes Single Line Question Option : No Option Orientation : Vertical**

A receptor which has intrinsic enzymatic property is

**Options :**

1. Insulin receptor
2. Progesterone receptor
3. Thyroxine receptor
4. Glucagon receptor

**Question Number : 115 Question Id : 254528595 Display Question Number : Yes Single Line Question Option : No Option Orientation : Vertical**

Antibiotic known to have bactericidal activity due to its ability to inhibit cell wall synthesis is

**Options :**

1. Piperacillin
2. Ciprofloxacin
3. Minocycline
4. Azithromycin

**Question Number : 116 Question Id : 254528596 Display Question Number : Yes Single Line Question Option : No Option Orientation : Vertical**

In the treatment of acute poisoning, forced diuresis should be avoided in conditions of

**Options :**

1. Pulmonary oedema
2. Rhabdomyolysis
3. Dehydration
4. Convulsing patients

**Question Number : 117 Question Id : 254528597 Display Question Number : Yes Single Line Question Option : No Option Orientation : Vertical**

Which of following statement reflect the mechanism of action of memantine used in the treatment of Alzheimer's disease?

**Options :**

1. Inhibitor of acetylcholinesterase enzyme
2. Agonist to the D<sub>2</sub> receptor in the central nervous system
3. Antagonizes the NMDA receptor
4. Inhibitor of monoamine oxidase enzyme

**Question Number : 118 Question Id : 254528598 Display Question Number : Yes Single Line Question Option : No Option Orientation : Vertical**

Vitamin B1 is also known as

**Options :**

1. Thiamine HCl
2. Folic acid
3. Riboflavin
4. Cyanocobalamin

**Question Number : 119 Question Id : 254528599 Display Question Number : Yes Single Line Question Option : No Option Orientation : Vertical**

All of the following parts of the heart are very sensitive to muscarinic receptor blockade except \_\_\_\_\_ .

**Options :**

1. Atria
2. Sinoatrial node
3. Atrioventricular node
4. Ventricle

**Question Number : 120 Question Id : 254528600 Display Question Number : Yes Single Line Question Option : No Option Orientation : Vertical**

Which of the following is an anti-dote for melathion poisoning?

**Options :**

1. Vit K
2. Protamine sulphate
3. Nalorphine
4. Pralidoxine